

# City of Melbourne

**Kate Vinot**

Director, City Strategy & Place  
City of Melbourne



CITY OF MELBOURNE

# Overview

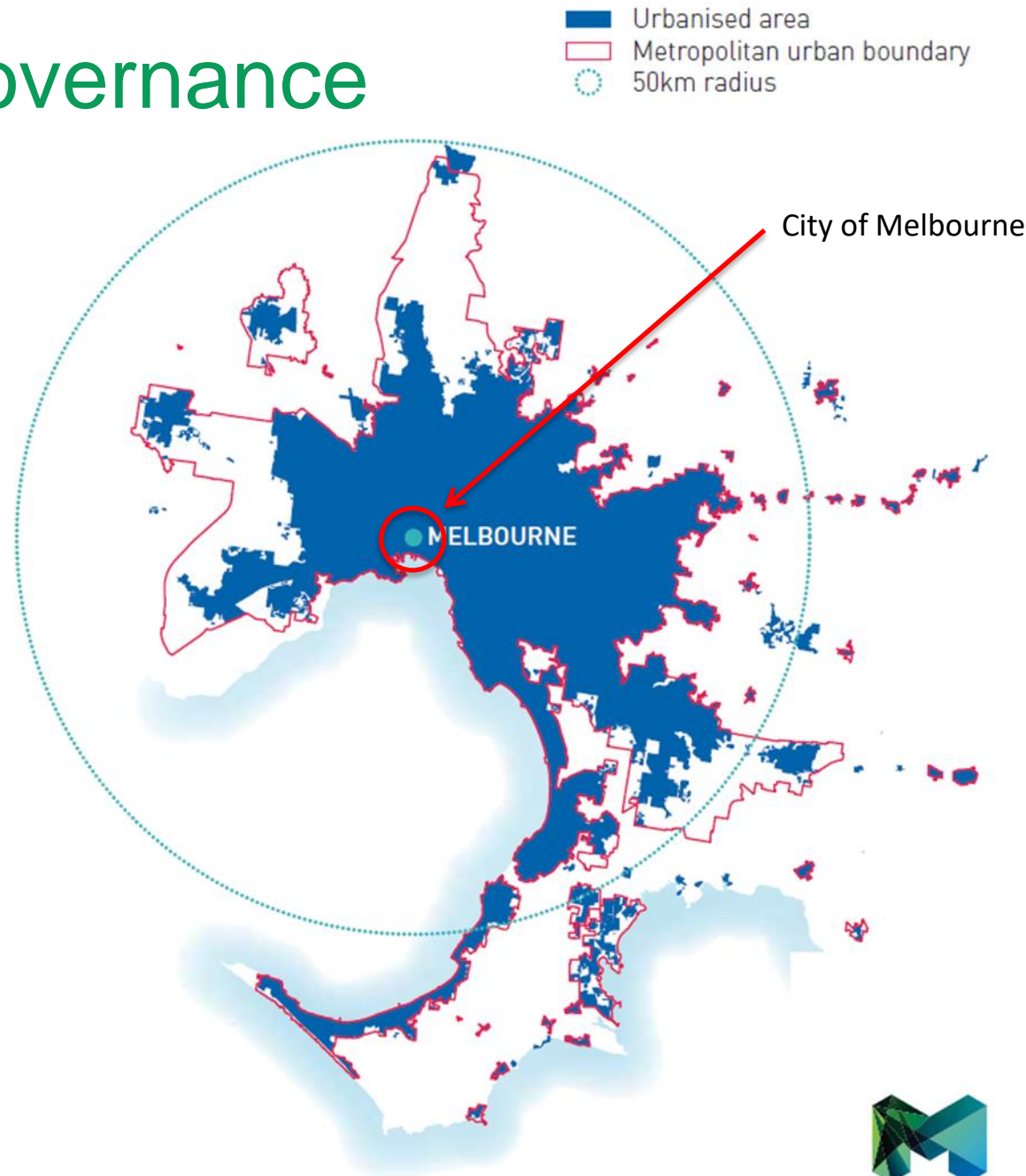
1. Melbourne's challenges
2. What we have to offer
3. What we hope to gain



# #1 – Complex governance

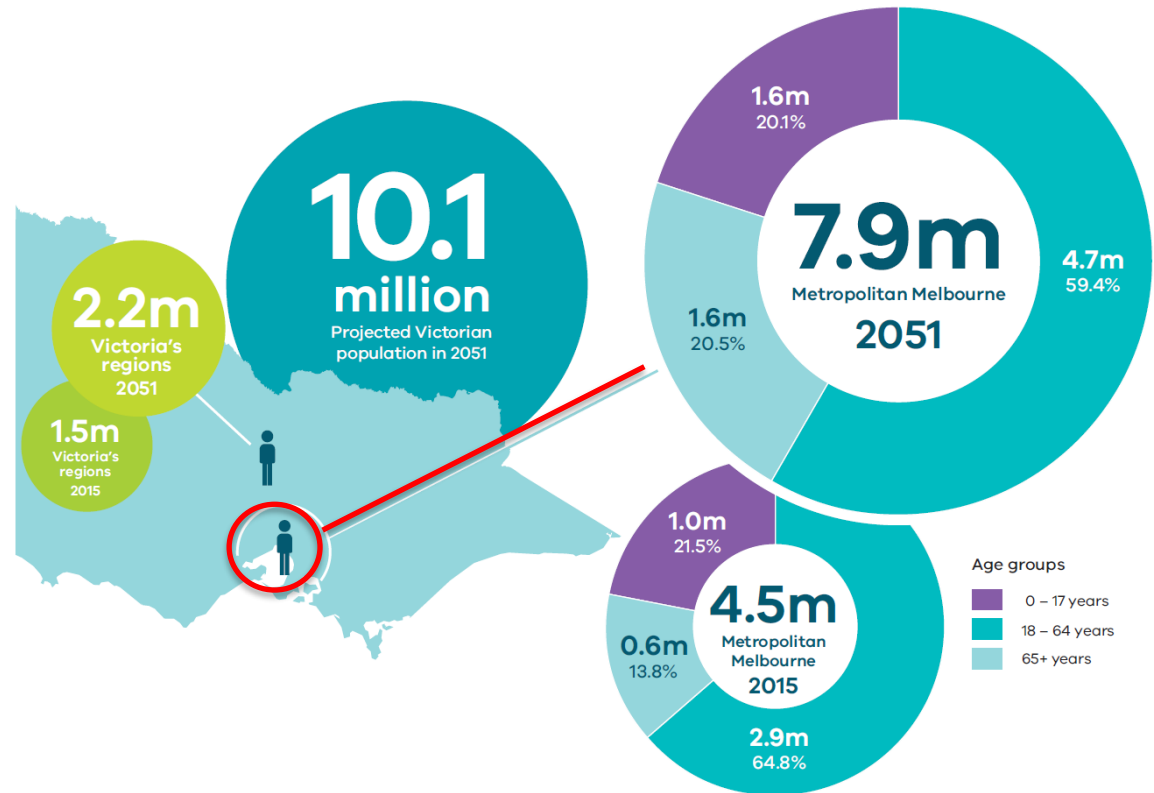
## Melbourne

- Nearly 10,000 square kms and >50km radius
- 1 State government and multiple departments
- 31 local government areas in Melbourne
- Separate agencies for planning, water, transport etc



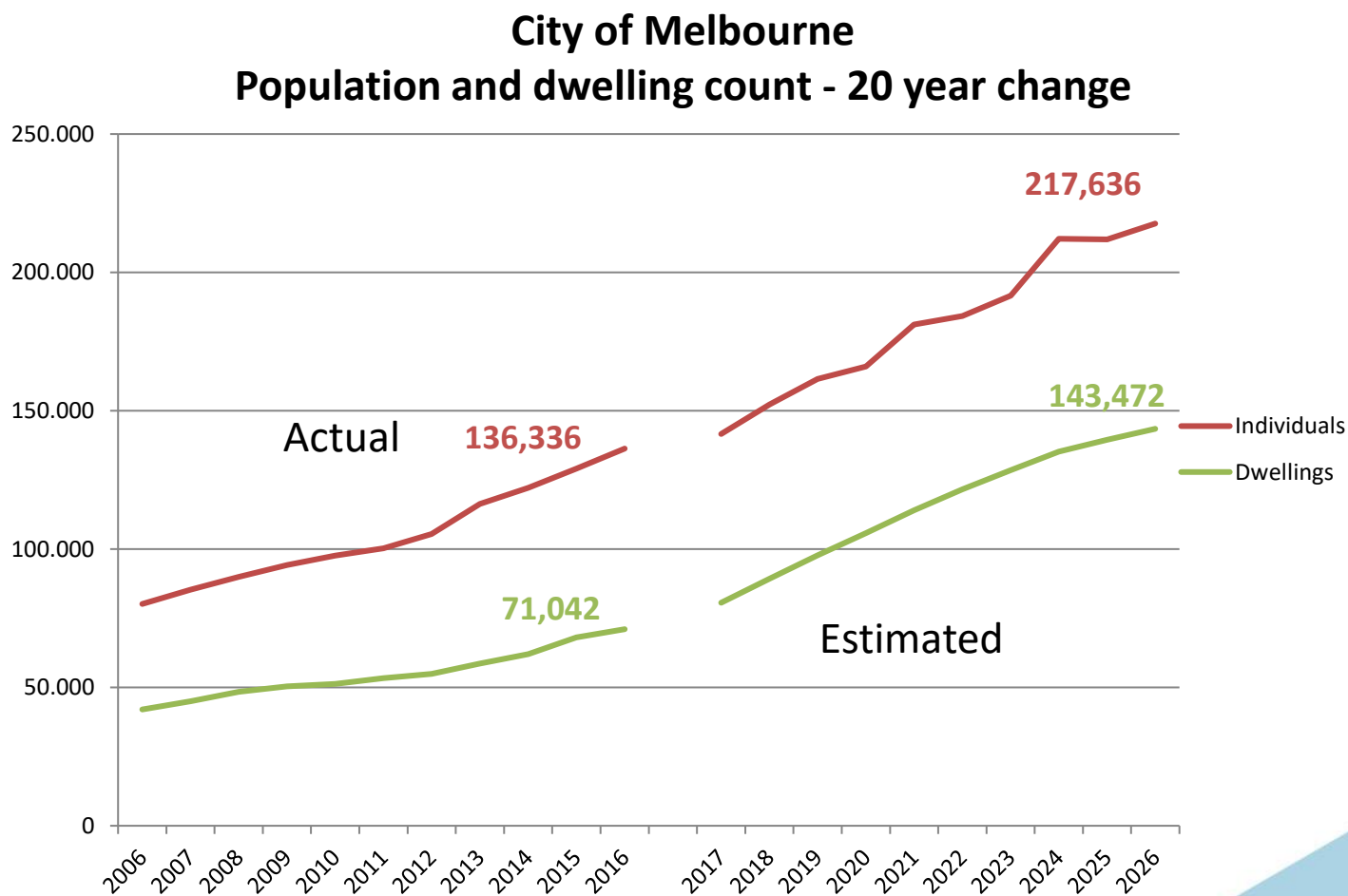
## #2 - Rapid population growth

- Currently 4.5 million people
- Projected growth to 7.9 million by 2051



Plan Melbourne 2017-2050

# Growth in the City of Melbourne





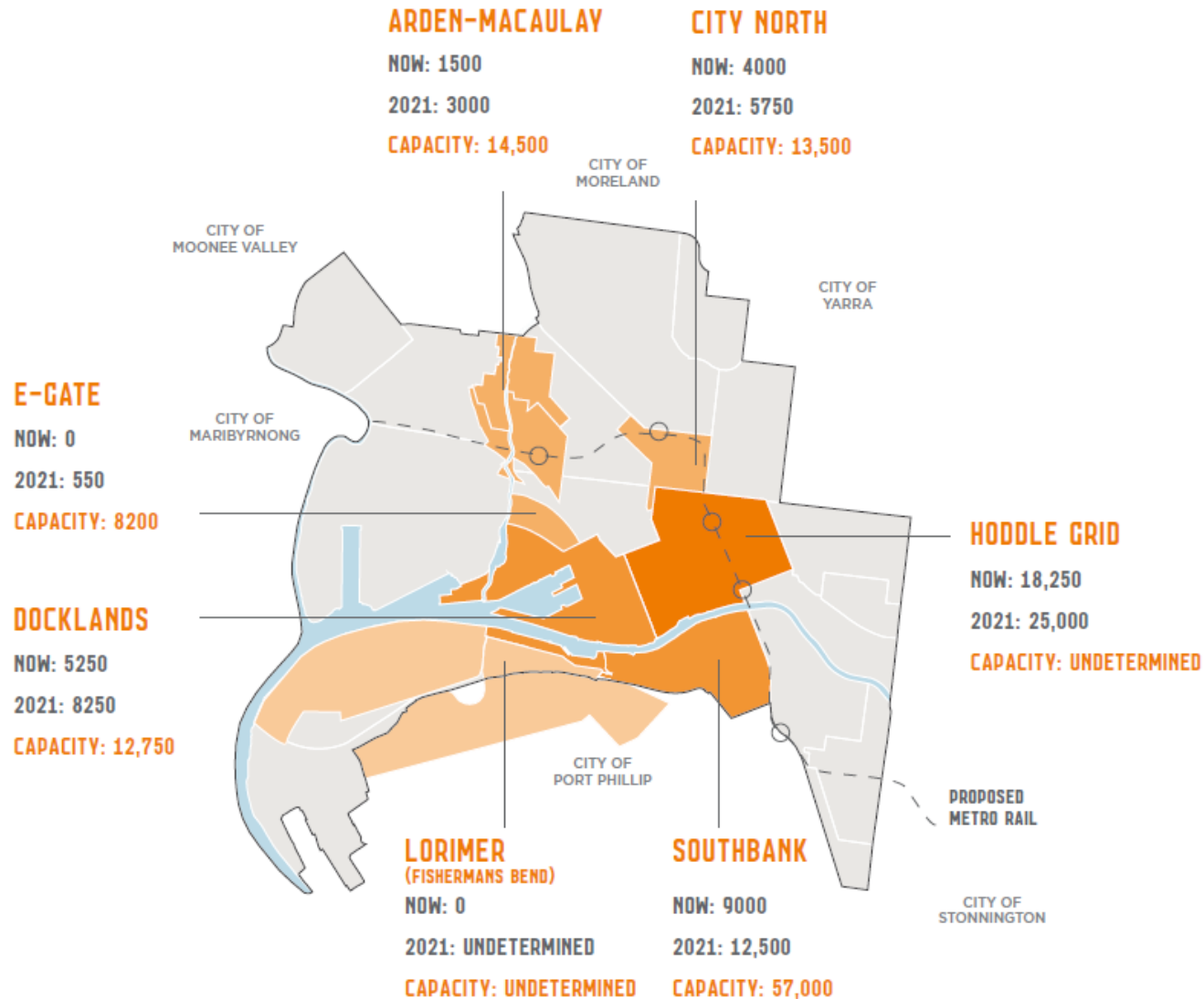
# #3 – Expansion into delta areas



# City of Melbourne and Urban Renewal

(> 700 ha)

- Urban renewal areas identified in our planning policy for majority of new growth
- From industrial areas to mixed use neighbourhoods
- Higher density development; more jobs; key workers





## 2. What we have to offer





# What we have to offer YOU

You have said you want to share experiences in:

- Smart Cities, data, transportation
- Urban Economy: innovation, start-ups
- Climate Change: Low-Carbon, Green Energy, Resilience
- Urban Regeneration: cultural heritage, green spaces, affordable housing



### 3. What we hope to gain

Great ideas  
that can help us  
stay as  
**liveable** as  
possible in the  
face of massive  
change

Initiatives that  
can help us  
become a more  
**sustainable**  
and **resilient**  
city

Collaboration  
to grow our  
**prosperity**  
especially  
through the  
knowledge  
sector