



South African Context

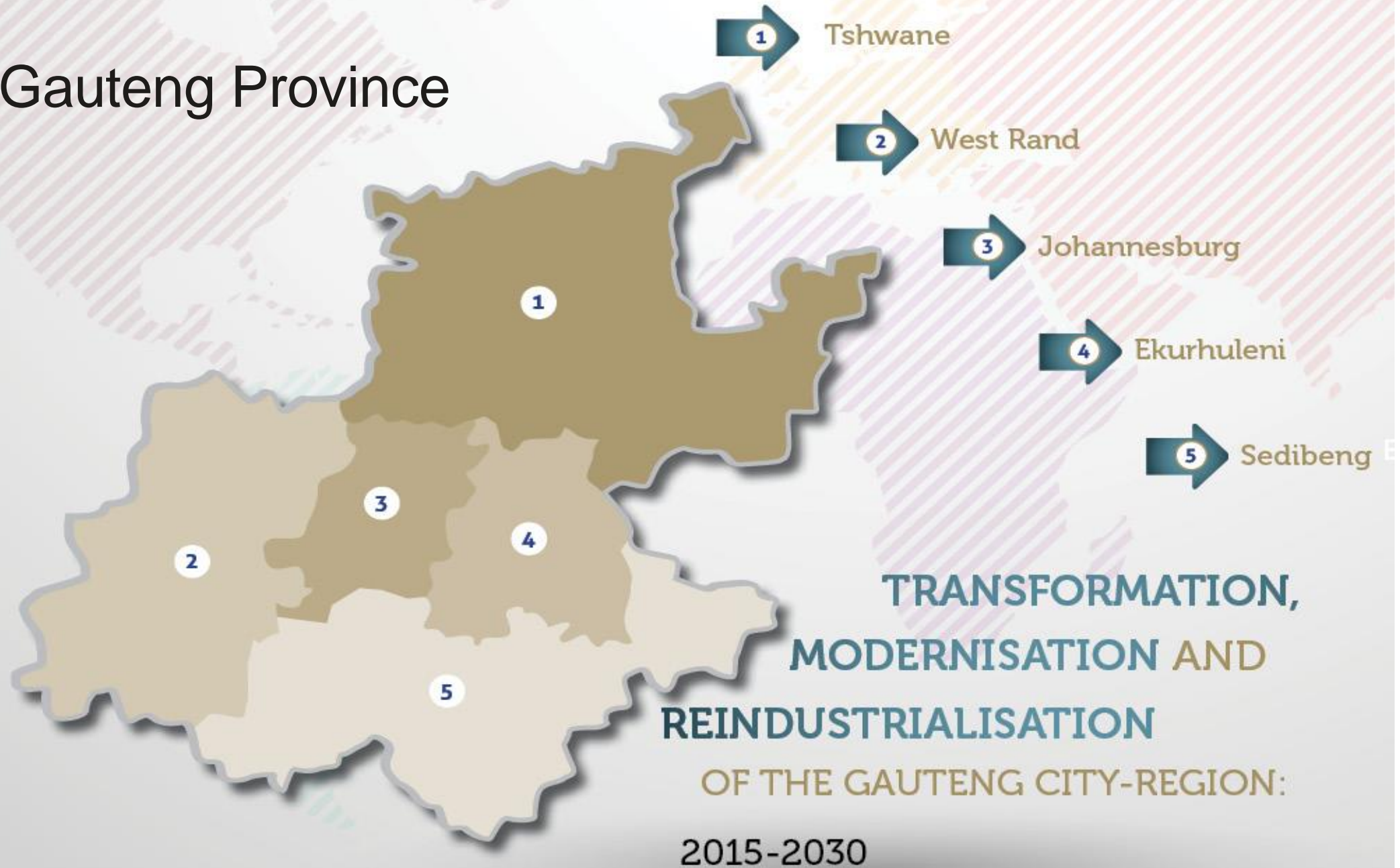


Smallest province and most populated province

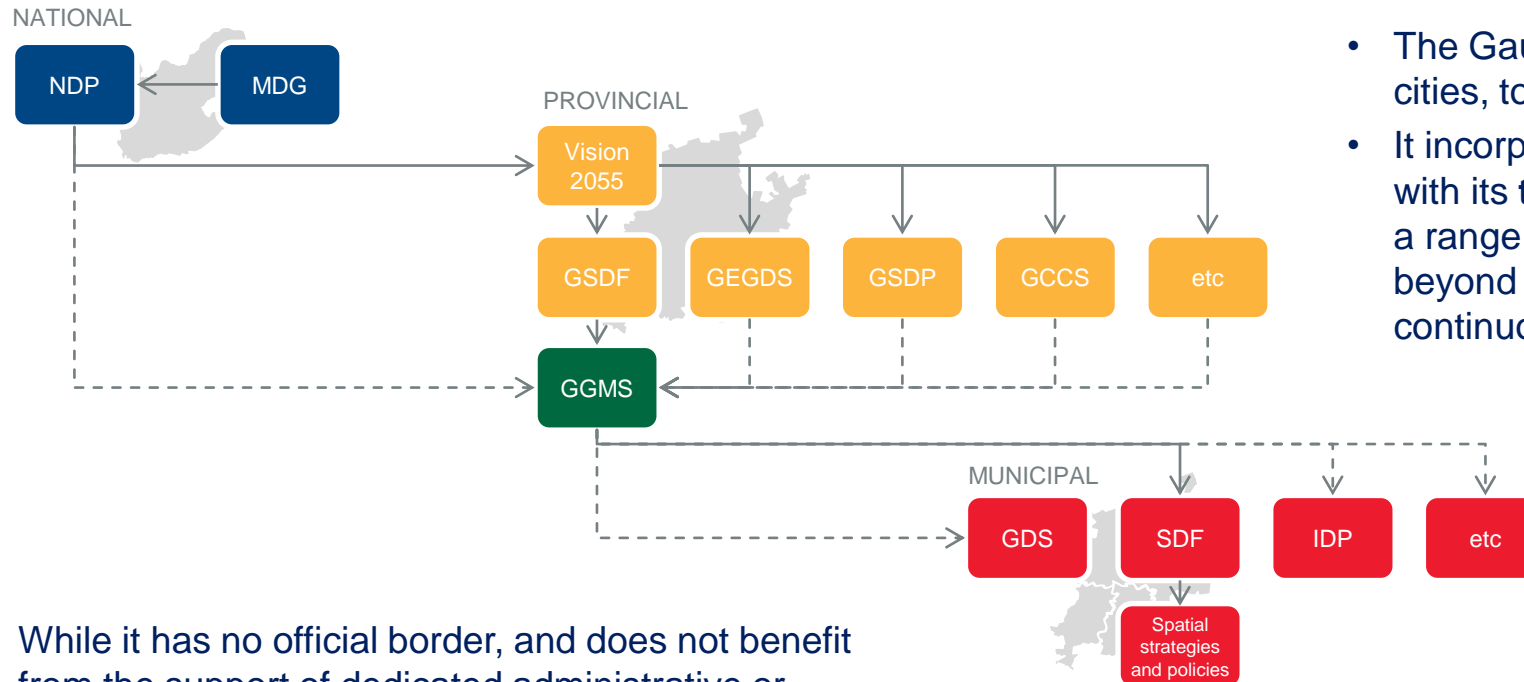
Land area 18, 176 km²

Population ~ 13 200 300 (2015)

Gauteng Province



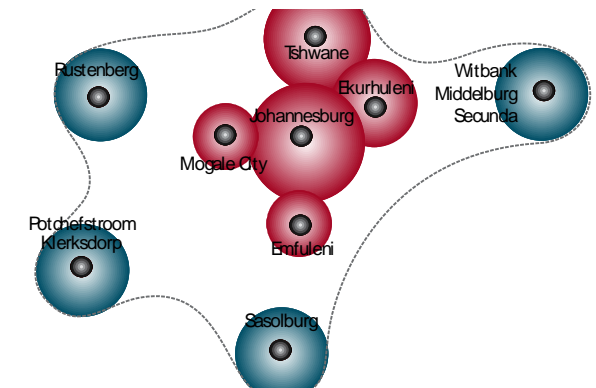
Policy Framework



- The Gauteng City Region includes a cluster of cities, towns and urban nodes
- It incorporates the Gauteng province in its entirety, with its **three large** metropolitan municipalities and a range of smaller urban centres across and beyond the province to create an almost continuous urban agglomeration.

While it has no official border, and does not benefit from the support of dedicated administrative or political agents, It represents a coherent economic and geographic space within which regional competitiveness may be harnessed

EMM is favourably located in the Economic Activity and Employment Area of the Gauteng Province.



Growth and Development Strategy 2055

Theory of Change/ MSDF 2015 2055



Transitions



DELIVERING CITY

2016 – 2021

Well managed,
resourced, financially
Sustainable Globally
Competitive service
delivery

CAPABLE CITY

2021– 2026

Inclusive industrial
economy
Meaningful reduction of
unemployment and
poverty

SUSTAINABLE CITY

2026– 2032

Clean, green and sustainable
African
manufacturing complex and
city development network

City of Ekurhuleni at glance



9 
TOWNS

17 
TOWNSHIPS

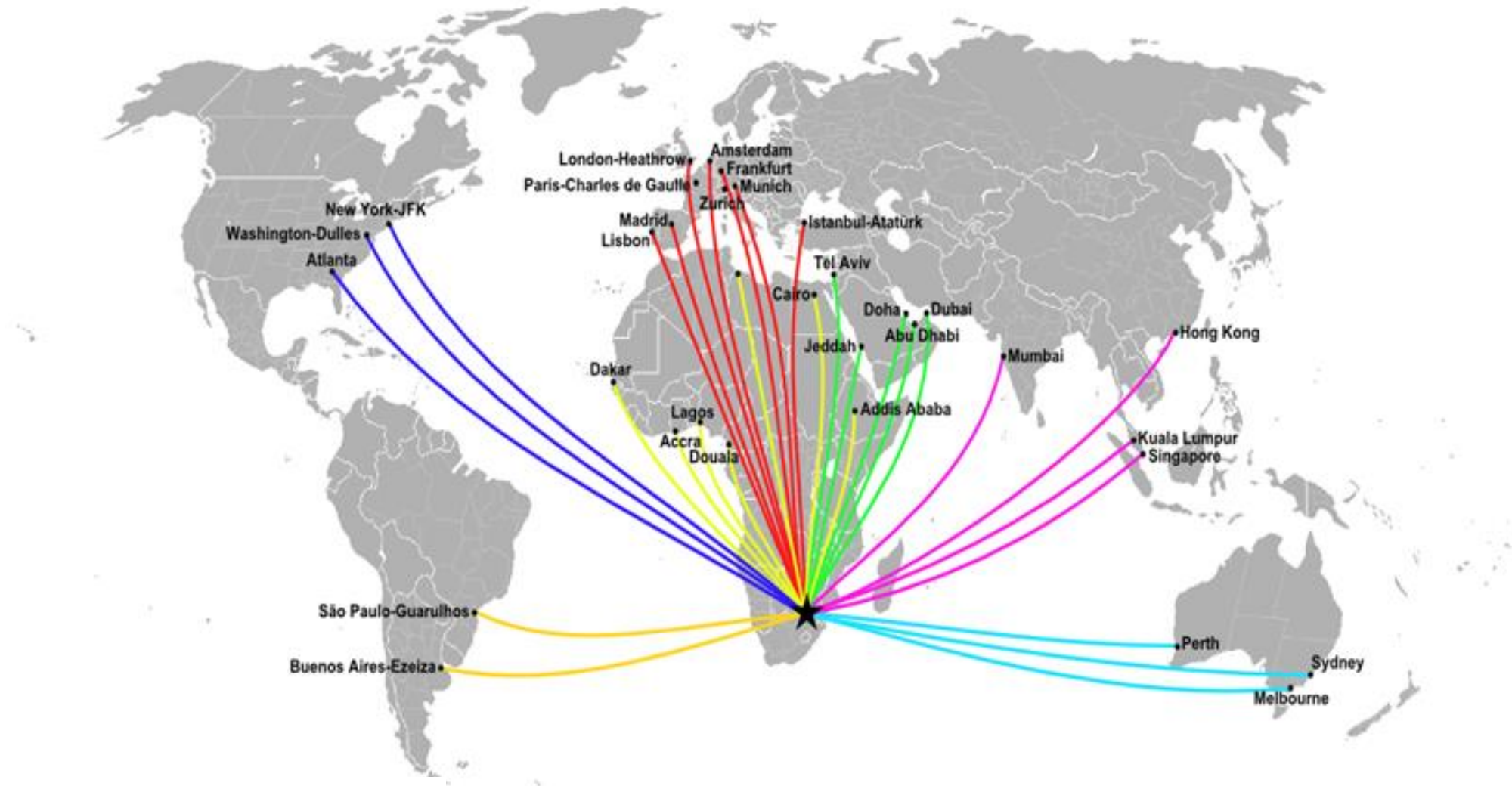
8000 
INDUSTRIES

3.1 
MILLION PEOPLE

STATUS QUO: VITAL STATISTICS

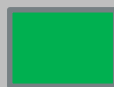
Population	2011	2015	2025
	3 178 470	3 358 474	3 687 961
Total area	197 549ha		
Urban area	41 934ha		
Agricultural area	97 540ha		
Open space area	9 596ha		
Roads and road reserves	48 479ha		
Capacity for growth	Number of people in present urban structure @ 20% densification ratio		4 030 167
	Number of people in Greenfields developments @ 20u/ha (gross)		2 071 854
	TOTAL		6 102 021 people

Global Connectivity



RE-GOVERN

- Permanent urban boundary
- Functional planning / management regions
- Planning to lead decision making
- Lesedi consolidation
- Growth Management Strategy
- Land acquisition (inter-governmental land)



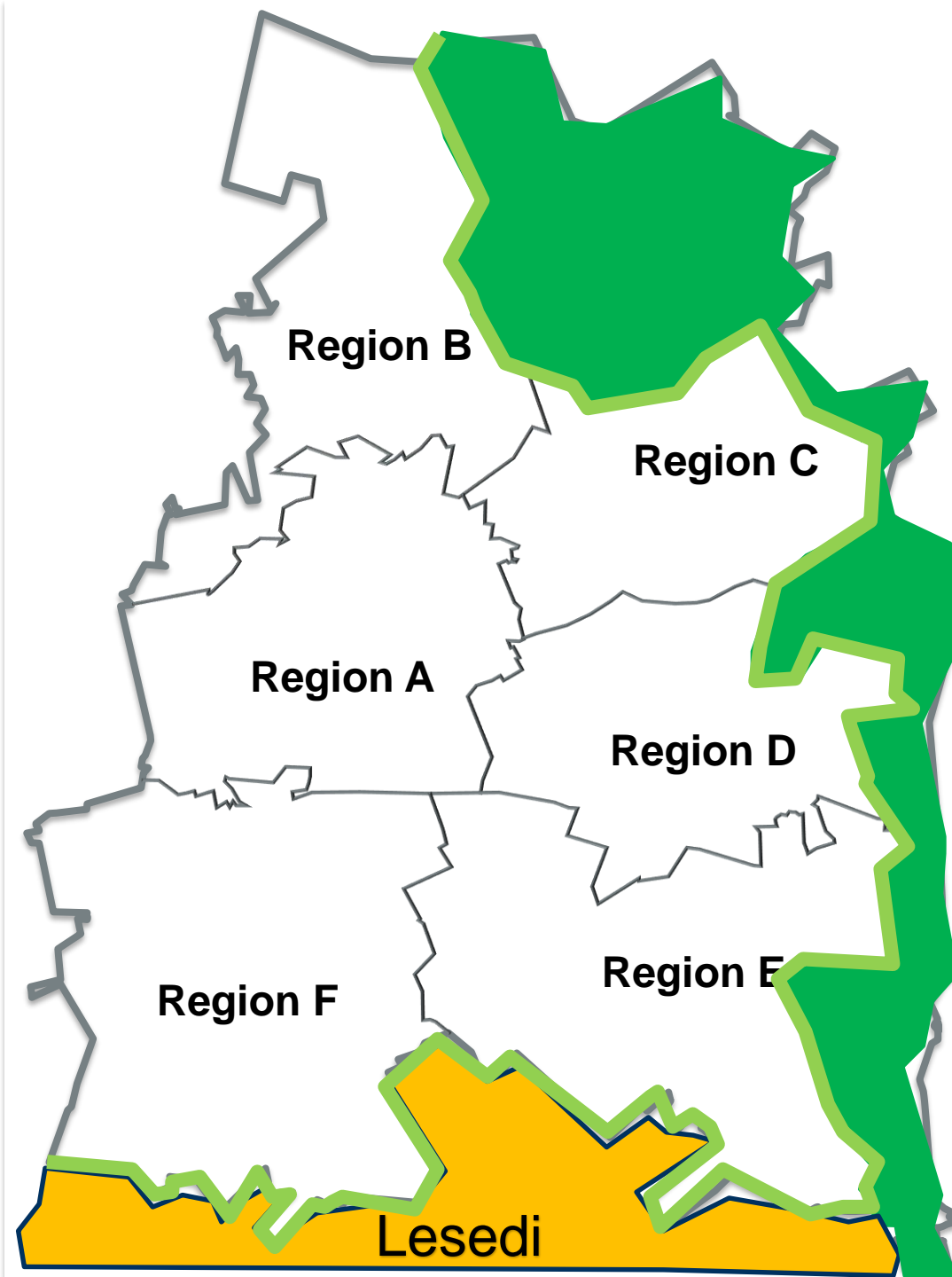
Agricultural Green Belt as Urban Edge



Lesedi



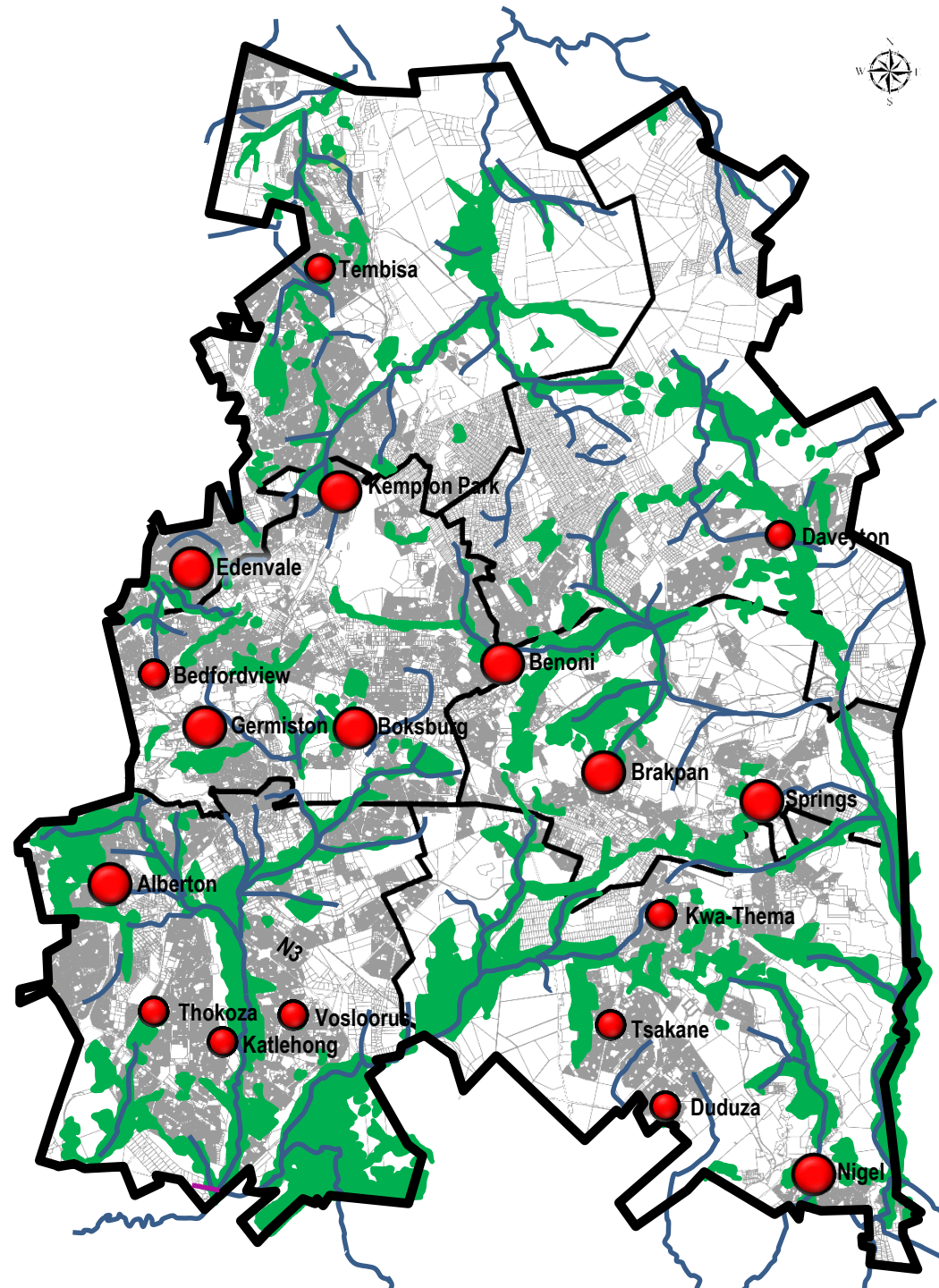
Regions



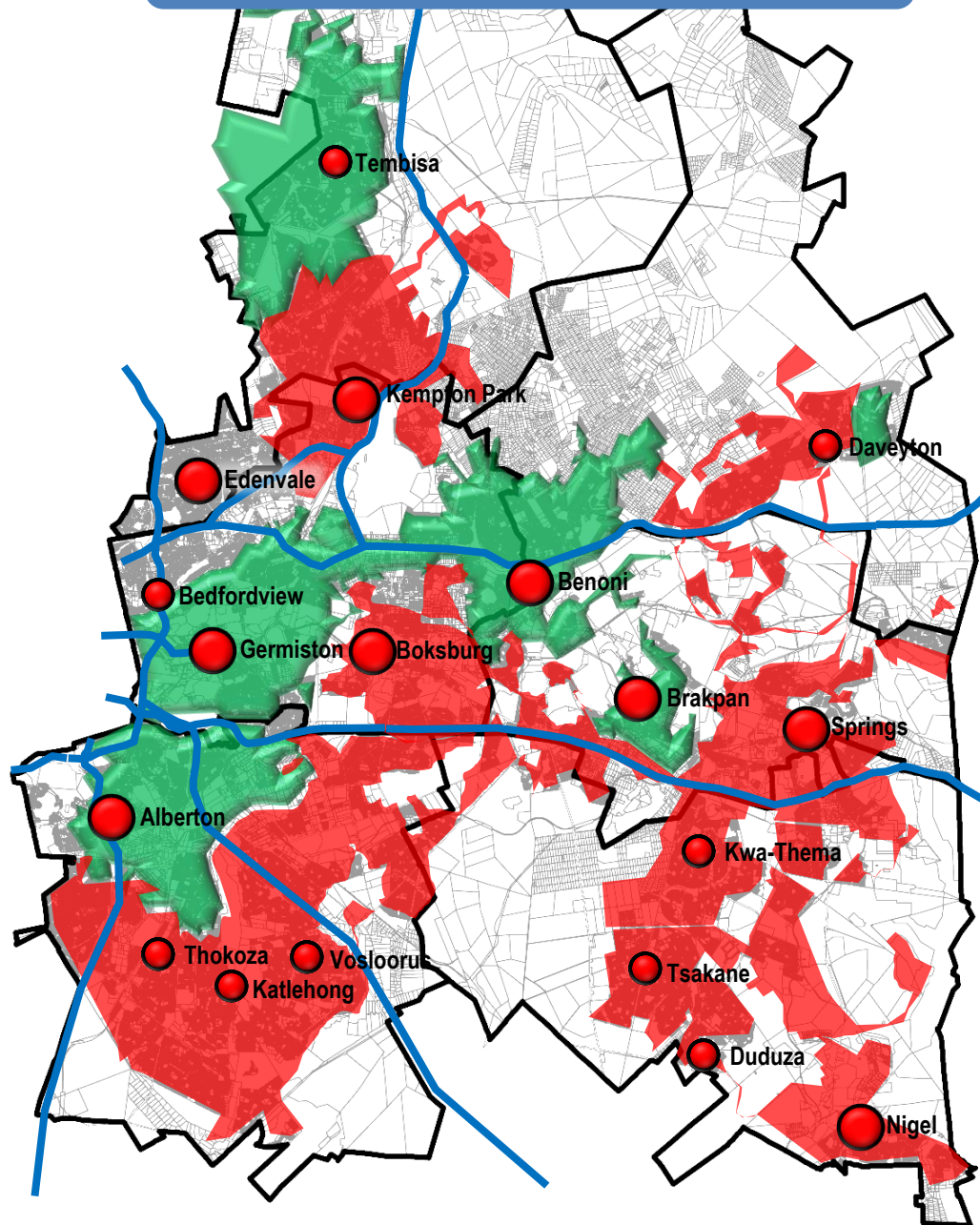
NATURAL ELEMENTS



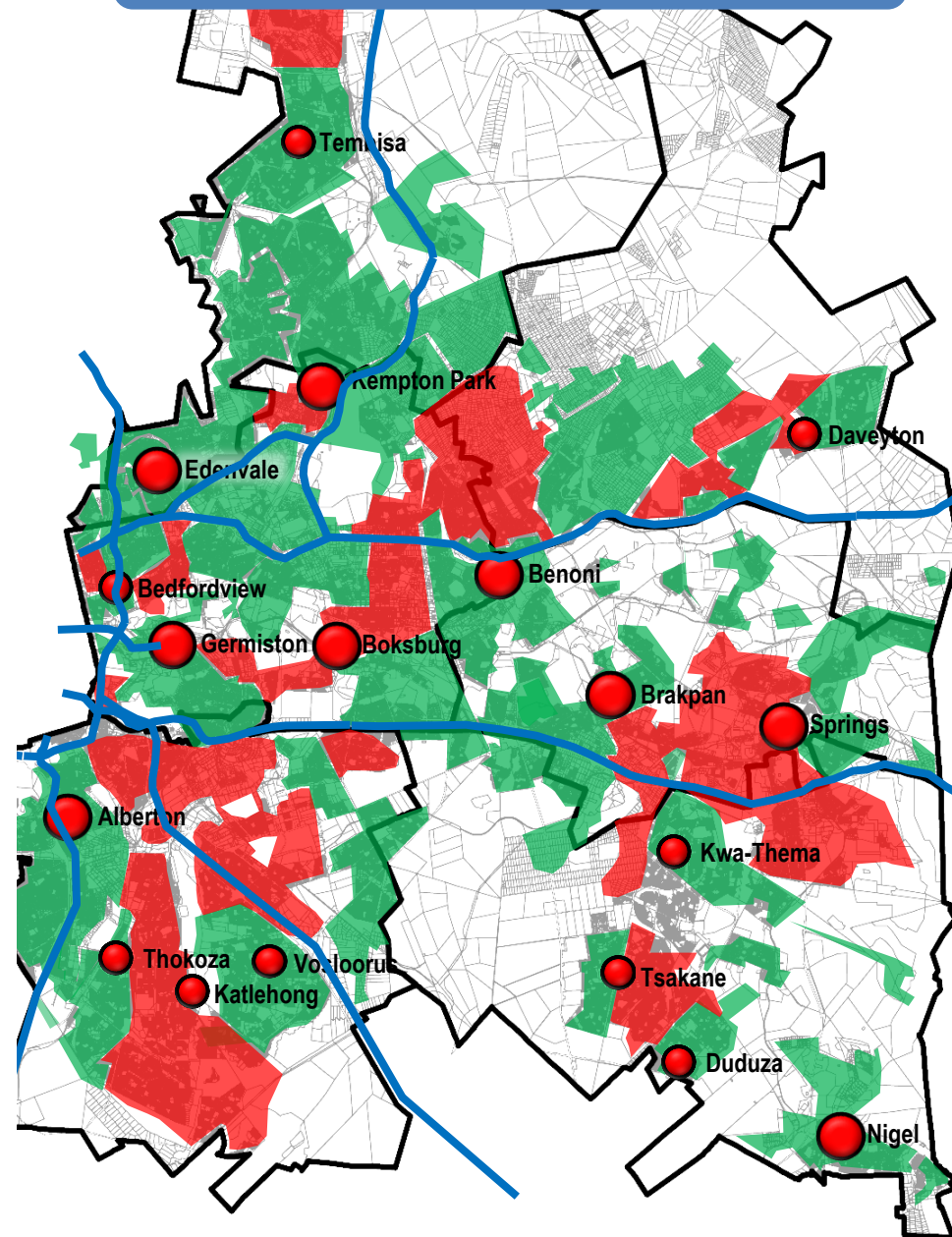
Open space system



SERVICES – SEWER AVAILABILITY



SERVICES – WATER AVAILABILITY



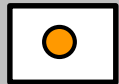
RE-URBANISE



Metro Core



Nodal retrofit



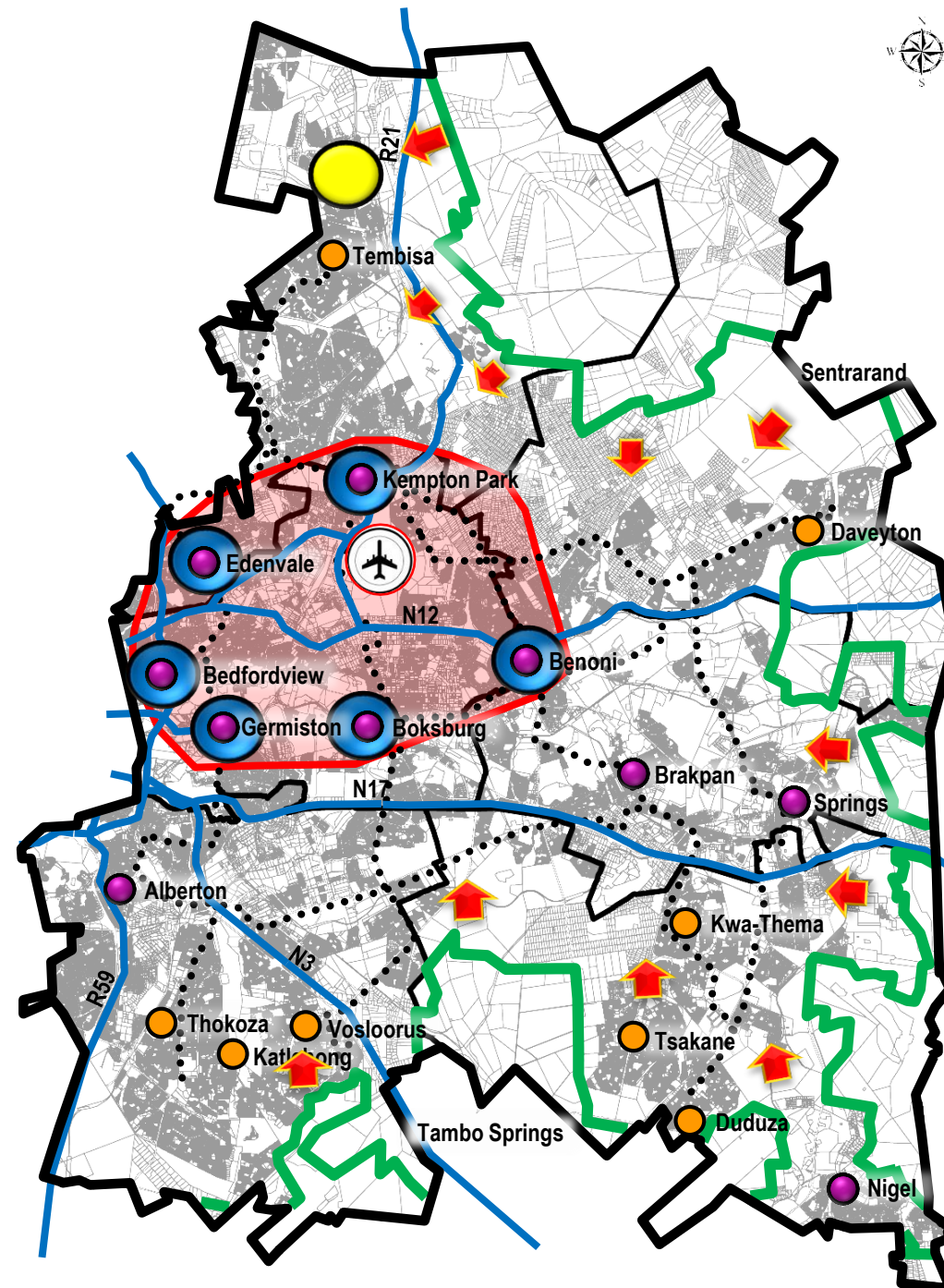
Regeneration areas



Public transport



Permanent urban boundary



DEVELOPMENT CONCEPT



5km, 10km and 15km radius



Metro core



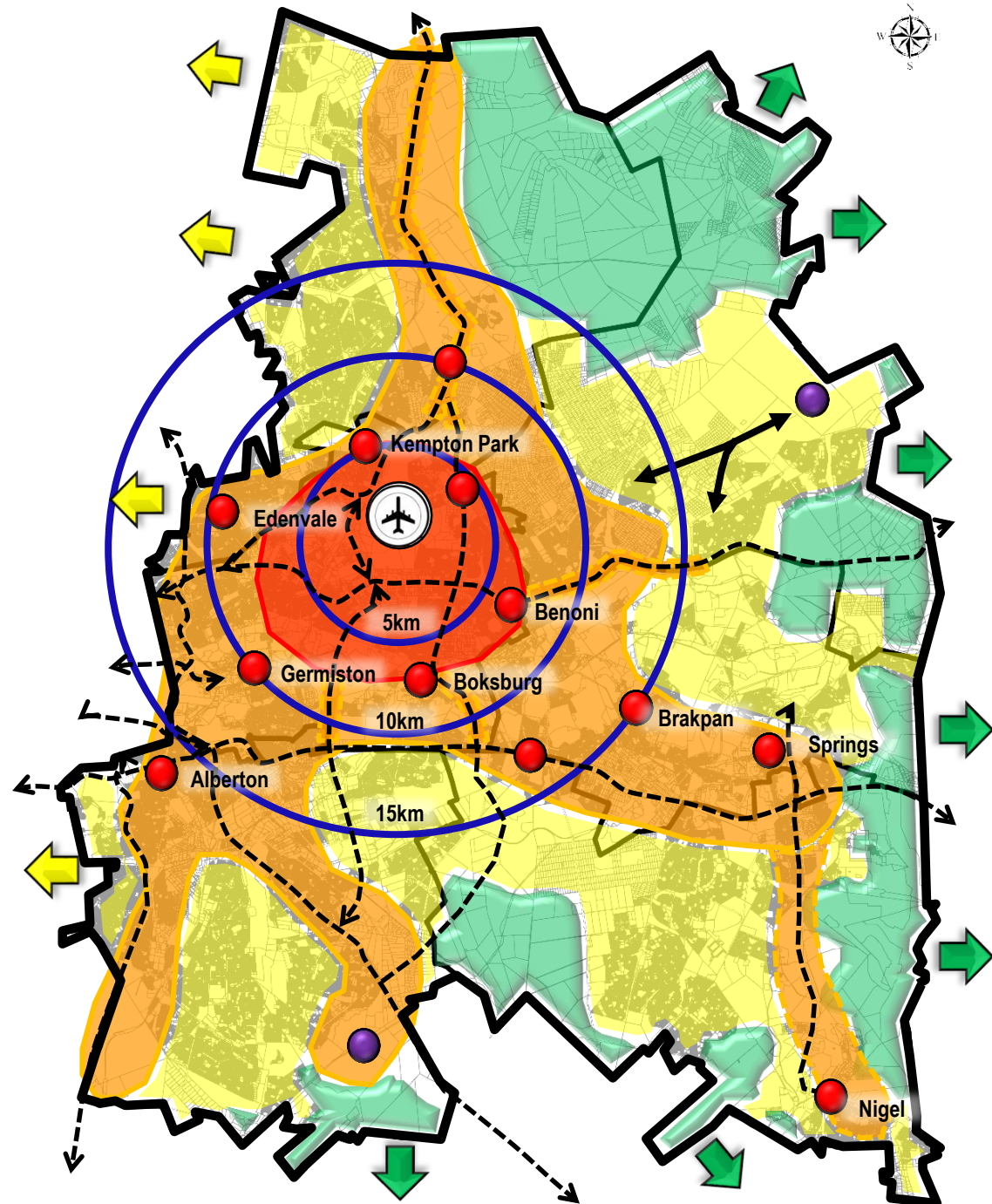
Core support zone (nodes and corridors)



Urban support zone



Rural / agricultural zone



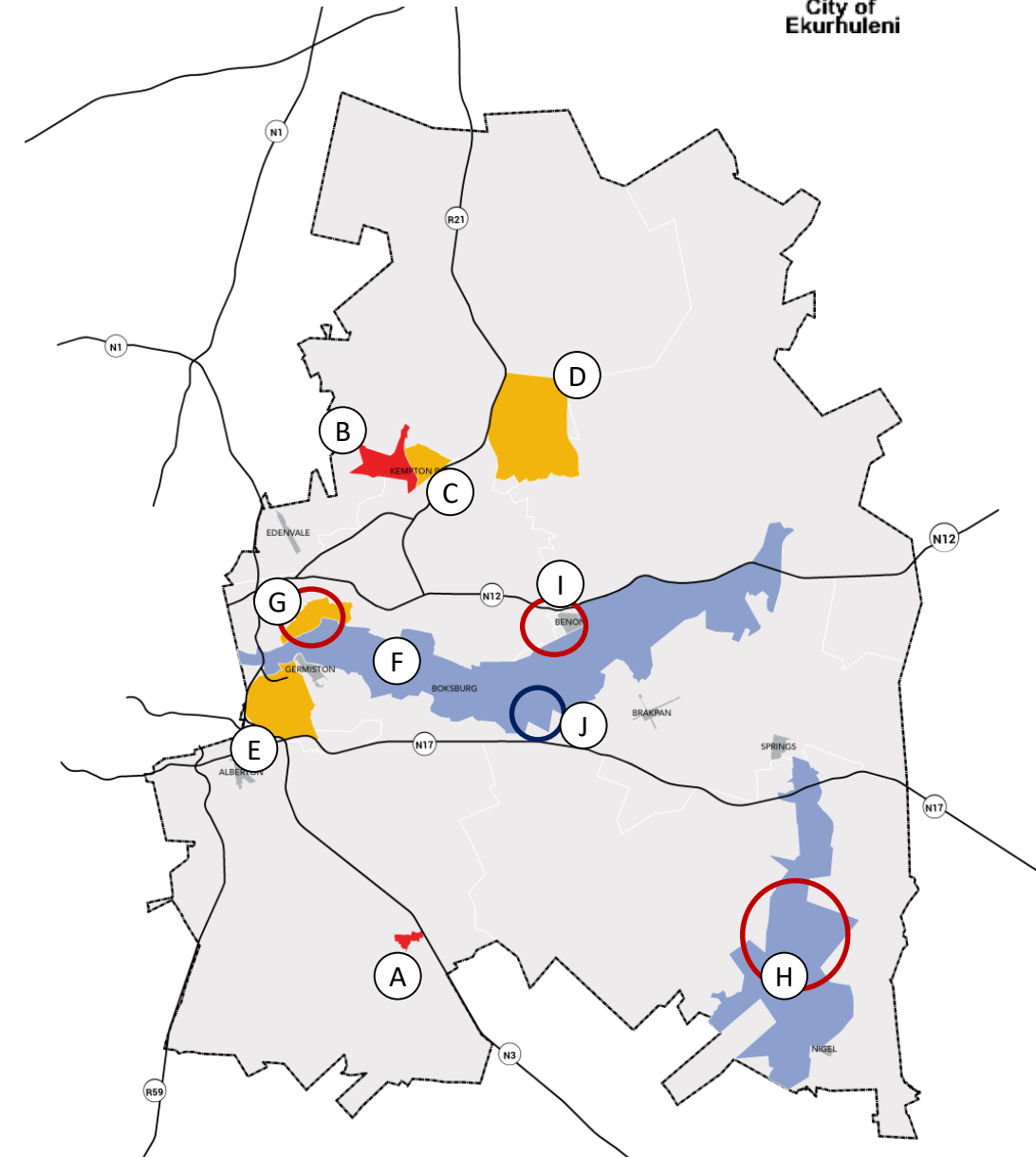
What does the Ekurhuleni Urban Design Initiative involve?



Urban Design Precinct Plans Formulated To Date



- | | | |
|-----------------------------|---|---------------------------|
| Ⓐ Thelle Mogoerane Hospital | } | Formulated during 2014-15 |
| Ⓑ Dries Niemandt | | |
| Ⓒ Kempton Park CBD | | |
| Ⓓ Bredell | } | Formulated during 2015-16 |
| Ⓔ Germiston Lake | | |
| Ⓕ Mining Belt | | |
| Ⓖ Primrose | } | Formulated during 2016-17 |
| Ⓗ Dunnotar | | |
| Ⓘ Benoni CBD | | |
| ⓵ Wattville-Leeupan | | |



CoE Aerotropolis

- 18 Billion euros of pipeline investment.



- City Of Ekurhuleni with an operating Budget of 2,2 billion euros for 17/18 financial year
- 10 MW of renewable energy by 2021



An aerotropolis is a city in which the layout, infrastructure, and economy are centered around a major airport. Ekurhuleni Metropolitan Municipality has worked hard toward realising this dream for businesses, airport companies and citizens alike. In an aerotropolis you can expect greater opportunity as proximity to O.R. Tambo grants you a ground-to-air shipping network, accessibility and seamless integration. It's a subject that deserves attention which is why we're inviting you to an informative talk with Prof. Kasanda, a well known expert of aerotropolis methodology.

Date: 12 - 18 July 2011.

Venue: Emperor's Palace

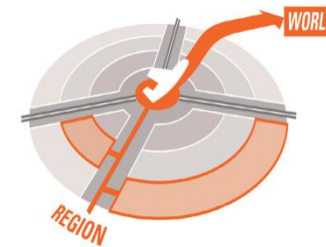
When we work as one, we become legends.

Ekurhuleni, building an aerotropolis together

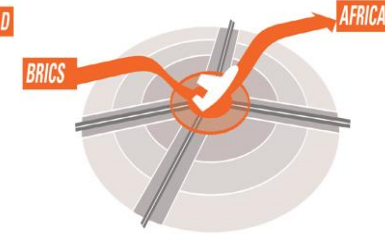
AERAOTROPOLIS ECONOMIC OPPORTUNITIES



Produce & Export



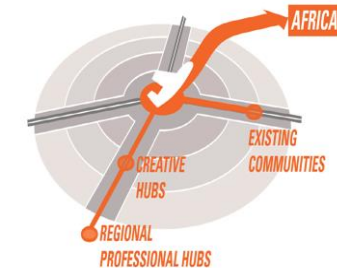
Transshipment



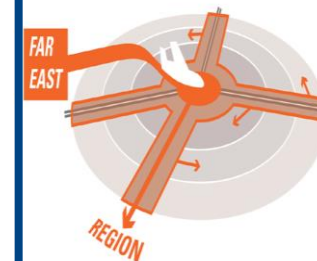
Value Add



Service Provider



Import & Distribute



- Activity Nodes & Hubs
- Transaction Flow
- Source Region
- Transportation Corridor
- Logistic Corridor
- Research & Manufacturing Regions
- Manufacturing Regions
- Agribusiness Regions



7 INVESTMENT THAT SUPPORTS CITY GROWTH



LAND USE STRATEGIZATION

- 1 Setting aside land until the market is ready protects strategic developments and Catalyst Projects.
- 2 Upgraded elementary and high schools at Rhodesfield using developer fees strengthens the local community.
- 3 Shared construction costs among multiple developments for shared parking facilities makes for efficient land use.

5 POLYCENTRIC CITY LINKED TO REGIONAL CENTRES



AEROTROPOLIS AS PEDESTRIAN CITY

- 4 Catalyst Projects integrated into the city and street environment enhances their economic and social impact.
- 5 Walkable streetscape environments with office and housing over retail builds an economically integrated city.
- 6 A circulator bus paired with bicycle parking makes each Hub accessible on foot most anywhere in the aerotropolis core.

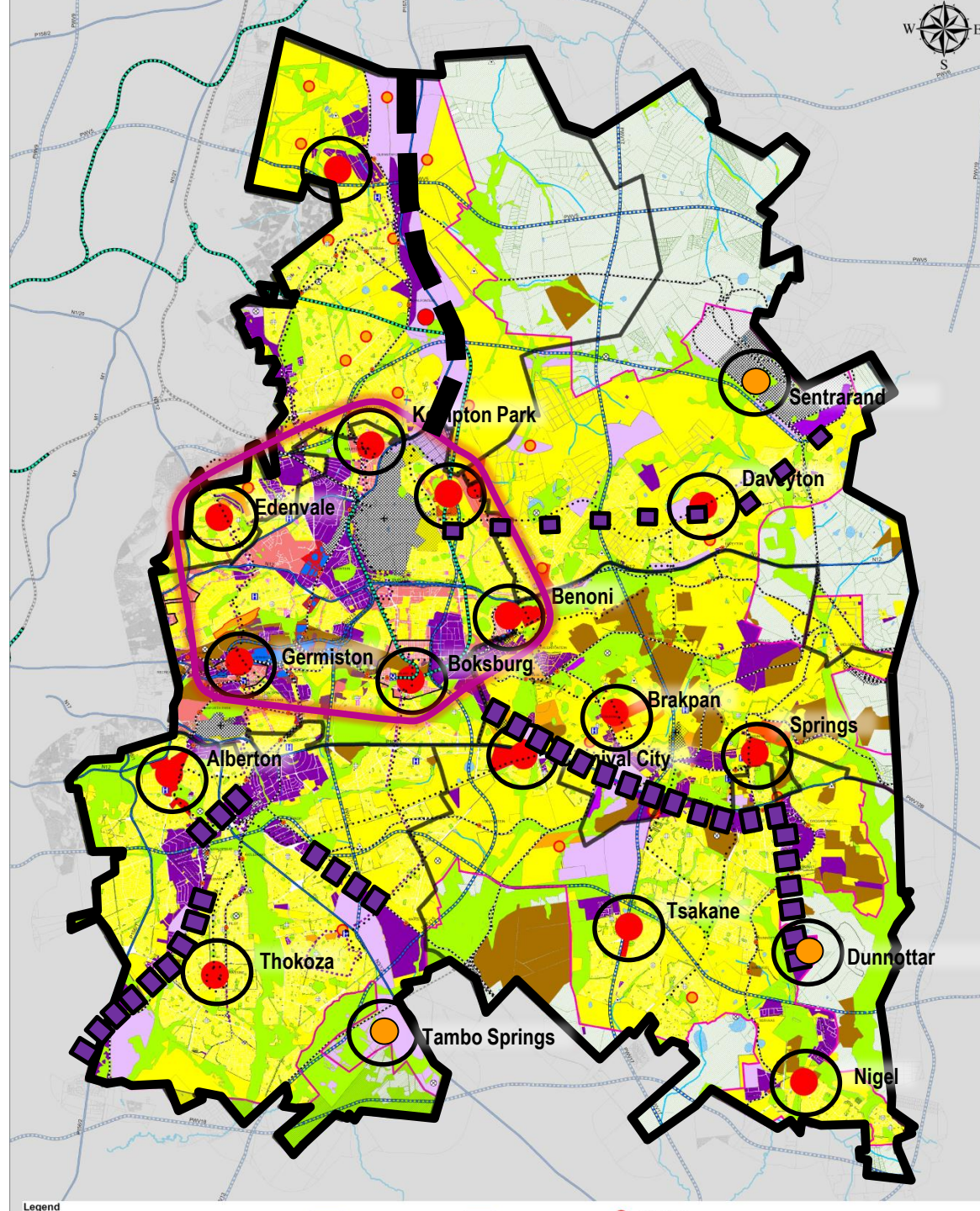
4 ENVIRONMENTAL RESILIENCE



PUBLIC AND PRIVATE REALM INTEGRATION

- 7 The Gautrain/Metrail at Rhodesfield is an opportunity for a dense professional center with global access.
- 8 Precinct Plans for key sites include an open space network that enhances development and ecological value.
- 9 Detailed private-realm development standards ensure shaded liveable spaces that extend the public realm.

City of Ekurhuleni Spatial Development Framework



World Cities Cooperation – 1st Step VISIT OF GRAZ (MARCH 2017)



Focus of the programme:

- 1) Aerotropolis
- 2) BRT / Transport / Mobility
- 3) O.R. Tambo Narrative Centre
as a chance to revitalise a
peri-urban area
- 4) Green Areas at Germistin
Lake





Defined areas of cooperation (mission next week)



Green Tech Cluster Styria:

The Green Tech Valley, located in Styria, is a global hot spot for innovative energy and environmental technologies. It supports Graz in various smart city projects and initiatives. Graz has offered to assist the City of Ekurhuleni in various emerging city planning projects

Regional Management:

Development of instruments and measurement tools for a joint regional management system, focusing on the creation of employment opportunities, mobility and inter-communal collaboration in Ekurhuleni.

Municipal Spatial Development:

Collaboration regarding the establishment of “ECOPROFIT”, a comprehensive environmental management system that promotes environmental management and business development. It is aimed at analyzing and optimizing companies regarding their environmental footprint.

Thank You

