



Durban, KZN Presentation



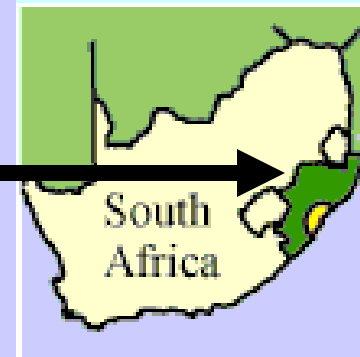
w w w . d i p a . c o . z a





Fast Facts:

- 100kms coast
- 2300 sq kms
- 3,6m people
- 61% KZN GVA
- 1 of SA's top Metros



Investment Targeting

- Property & Tourism Investments (*)
- Agri-Business/Agri-Processing
- Maritime & Logistics
- ICT&E (incl. BPO/Call Cntrs)
- Manufacturing: (incl. Durban Film Office, Auto/Chemical/Textile & Clothing Clusters, etc)
- “Green Economy”

Durban's Investment Promotion





Durban, KZN
South Africa



Development Priorities & Plans





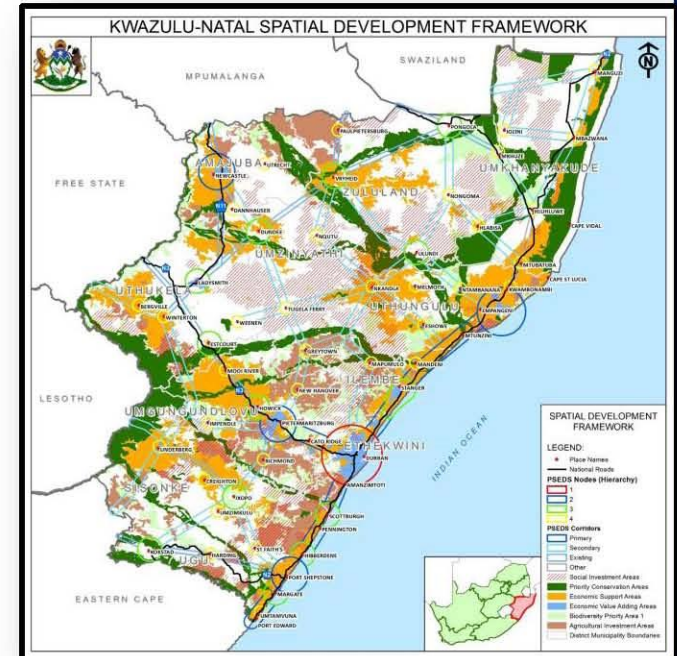
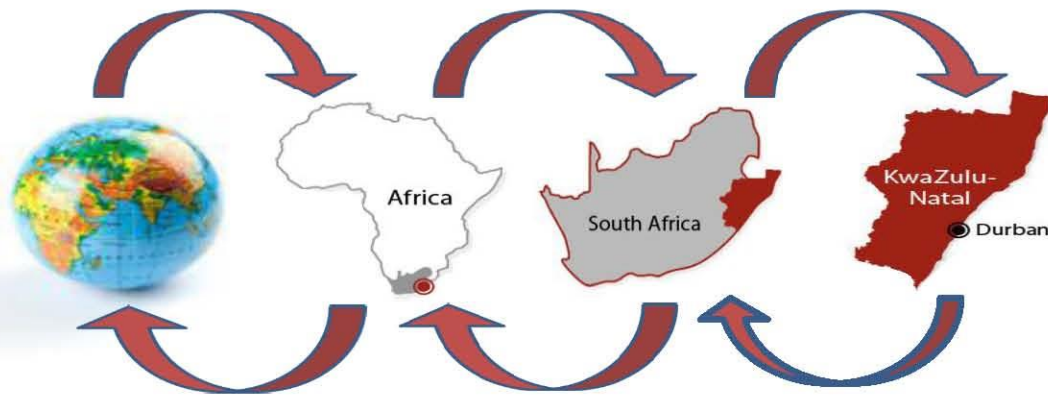
PRESIDENTIAL INFRASTRUCTURE COORDINATING COMMISSION

Summary of 17 SIPs

No	STRATEGIC INTEGRATED PROJECTS
1	Unlocking the Northern Mineral Belt with Waterberg as a Catalyst
2	Durban -Free State - Gauteng Logistics and Industrial Corridor
3	South Eastern Node and Corridor Development
4	Unlock the Economic Opportunities in the North West Province
5	Saldanha - Northern Cape Development Corridor
6	Integrated Municipal Infrastructure Project
7	Integrated Urban Space and Public Transport Programme
8	Green Economy in support of the South African Economy
9	Electricity Generation to support Socio-Economic Development
10	Electricity Transmission and Distribution for all
11	Agri-logistics and Rural Infrastructure
12	Revitalisation of Public Hospitals and other Health Facilities
13	National School Build Programme
14	Higher Education Infrastructure
15	Expanding access to communication technology
16	SKA and Meerkat
17	Regional Integration for African Co-operation and Development



WHERE ARE WE WITH THE KWAZULU-NATAL PROVINCIAL GROWTH AND DEVELOPMENT STRATEGY AND PLAN (2030)?



PRESENTATION BY THE KZN PROVINCIAL PLANNING COMMISSION



Some Catalytic/Major Projects

**Lubombo
Transfrontier Park**

**Zulu Cultural and
Battlefields
Tourism**

**Hydro and other
renewable energy
projects**

**Agricultural
Development
Initiatives
throughout the
Province**

**Maluti-
Ukhahlamba
Transfrontier Park**

**Durban/Gauteng
Corridor**

**iSimangaliso
Wetland Park**

**Richards Bay Port
Developments**

Richards Bay IDZ

**Industrial
Regeneration**

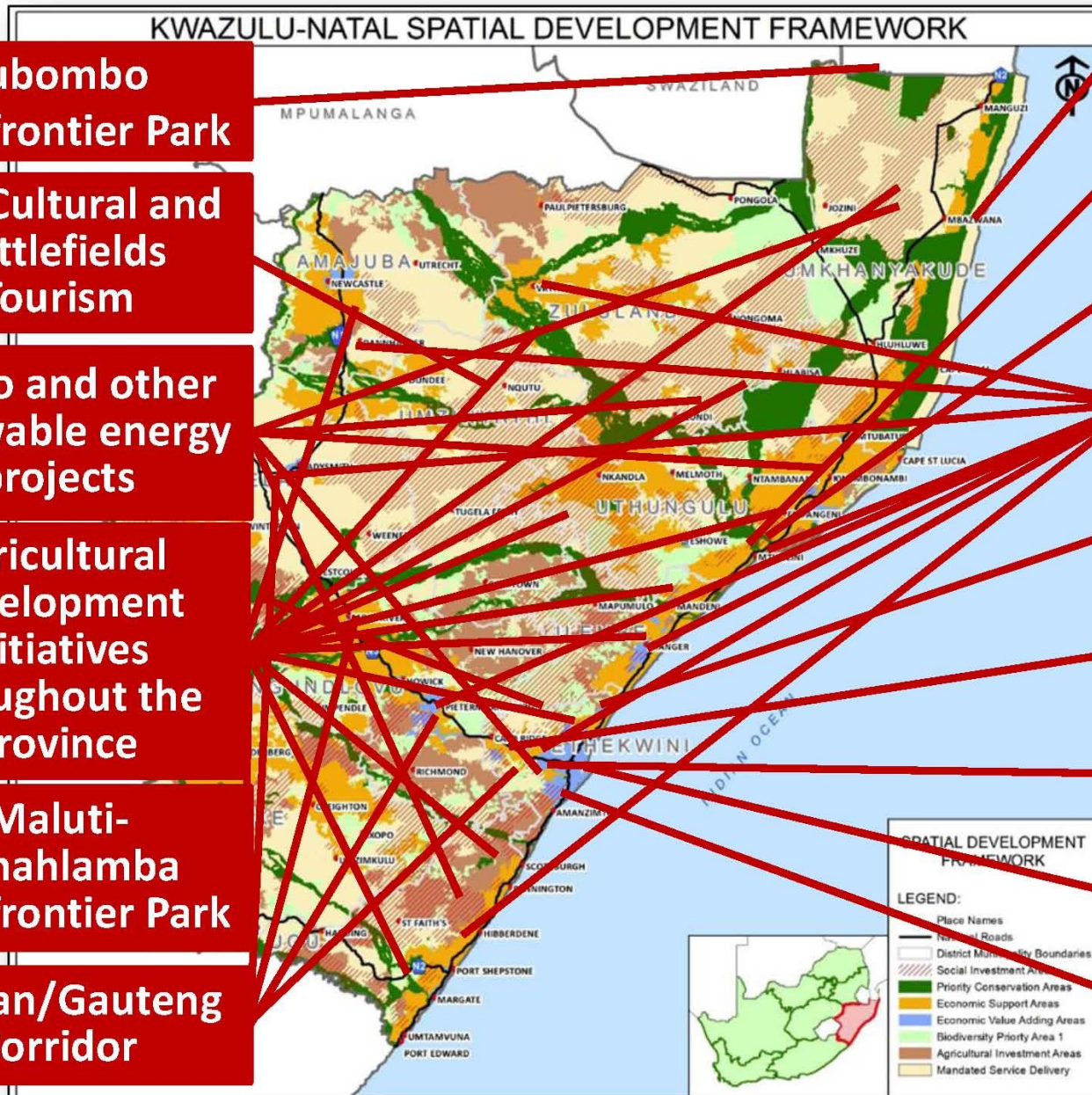
**Dube Trade Port
Aerotropolis**

**Dry Port and
Logistics Hub**

**Durban Back of Port
Development**

**Expansion to
Durban Port**

New Dig-out Port



New City Architecture

Outcome:
High Quality of Life for ALL People of
Durban

People: youth, women, vulnerable
& the poor in particular

Places: informal settlements,
townships, rural areas & suburbs

Access to
basic
services;
human
settlement
and transport

Equitable
distribution of
wealth, decent
jobs and
entrepreneurship

Access to education,
health, sport, arts,
culture and leisure for
total human
development and
free from crime and
other social
pollutions

Participative &
Caring
government &
administration
that apply and
live by Batho
Pele principles

Sustainability of: resources;
development solutions; and the
environment to mitigate against adverse
climate change

Smart and technology-wise City

***eThekwinini Vision: “To be Africa’s
most caring & livable City”***





Durban Harbour

- **Durban's physical port infrastructure and traffic levels are colossal by African and Southern Hemisphere standards, with:**
- Total annual cargo handled of +/-70 million tons
- **Container traffic of nearly 3 million TEU'S annually, the port stands as:**
- A leading container port in the South Hemisphere (vying for top spot with Melbourne, Australia)
- A leading diversified general cargo port in the Southern Hemisphere (vying for top spot with Santos, Brazil)
- The largest and most diversified set of port-ancillary establishments in any port city in the southern hemisphere



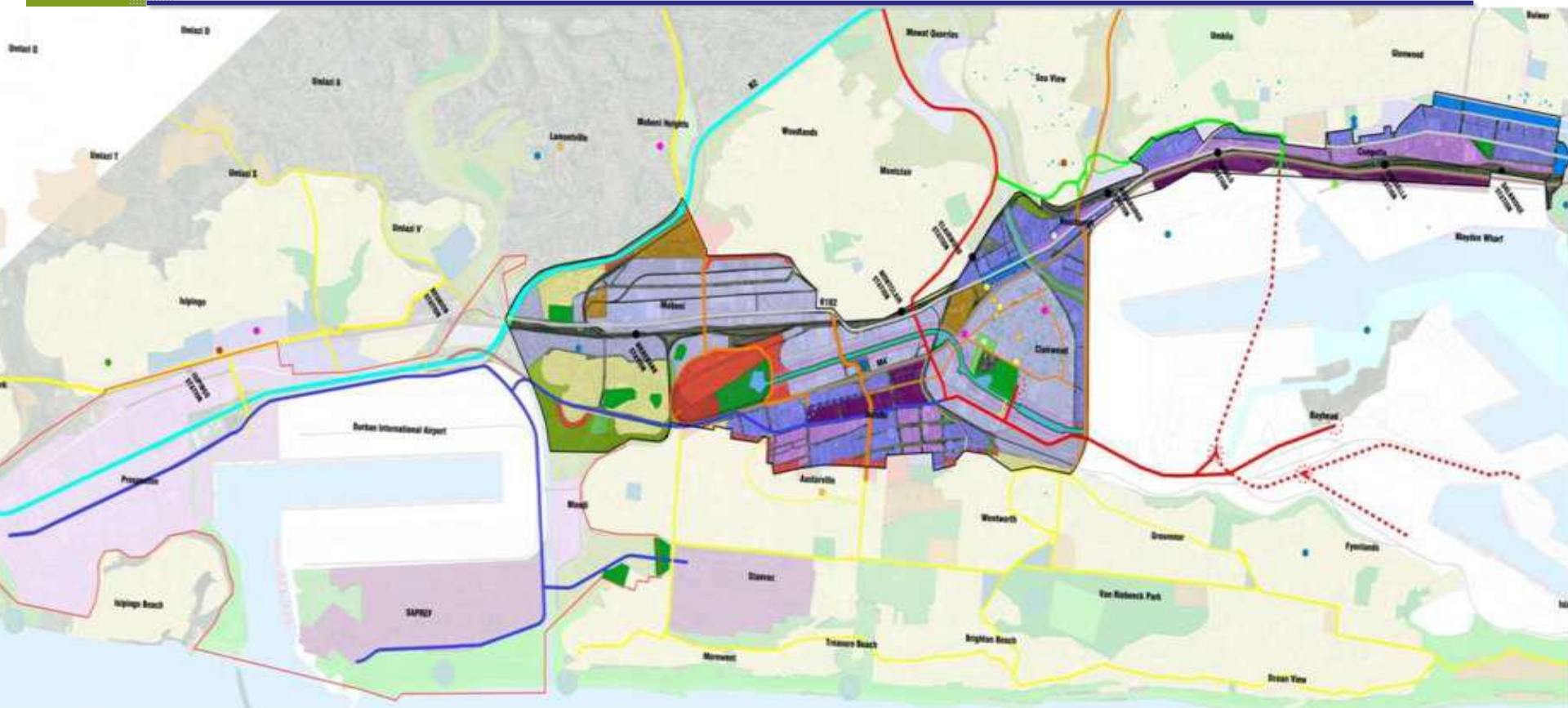
The old Durban International Airport Redevelopment to new Dugout Port



Durban Dugout Port 2050 Projection



Back Of Port Local Area Plan



MOVEMENT & CIRCULATION STRUCTURE

- N2 HIGHWAY
- M4 HIGHWAY
- EXISTING ROADS
- PHASE 1 ROADS: LINK TO THE EXISTING HARBOUR AND N2
- PROPOSED INTERNAL PORT ROUTE
- PHASE 2 ROADS: LINK FROM EXISTING HARBOUR TO M7 AND N2
- PROPOSED LINK FROM M7 TO UMHLATUZANA ROAD
- PHASE 3 ROADS: LINK TO THE NEW HARBOUR
- MIXED TRAFFIC ROAD
- RESIDENTIAL ROADS

OPEN SPACE STRUCTURE

- COASTAL CORRIDOR & DUNE SYSTEM
- RIVER CORRIDOR & CANAL SYSTEM
- CONSERVATION/ PASSIVE RECREATION
- ACTIVE RECREATION
- CORRIDOR PLANTING STRATEGY
- PLACES OF SIGNIFICANCE
- CEMETERY
- WATERWAY SYSTEM

LAND USE STRUCTURE

- INTERFACE AREA (office, service industry)

- MIXED USE / COMMERCIAL (Retail, services, offices, residential)
- SHOPPING
- LIGHT INDUSTRIAL (light industrial, services, offices)
- LOGISTICS A (distribution, assembly, warehousing, offices, container storage)
- LOGISTICS B (distribution, assembly, warehousing, offices)
- GENERAL INDUSTRY (manufacturing, warehousing, distribution)
- OFFICES (2 - 3 storeys)

- LOW DENSITY OFFICE PARK (1 storey)
- NOXIOUS INDUSTRY
- RESIDENTIAL
- INSTITUTION
- CULTURAL GRAVE
- CULTURAL CENTRE
- OTHER CULTURAL BUILD
- CULTURAL MONUMENT
- LISTED BUILDINGS
- CULTURAL SITE
- CHURCH
- TEMPLE
- MOSQUE

DUBE TRADEPORT

2,000 Hectare Masterplanned Development incorporating:

King Shaka International Airport

- Intercontinental Air Platform for Passenger and Freight Operations

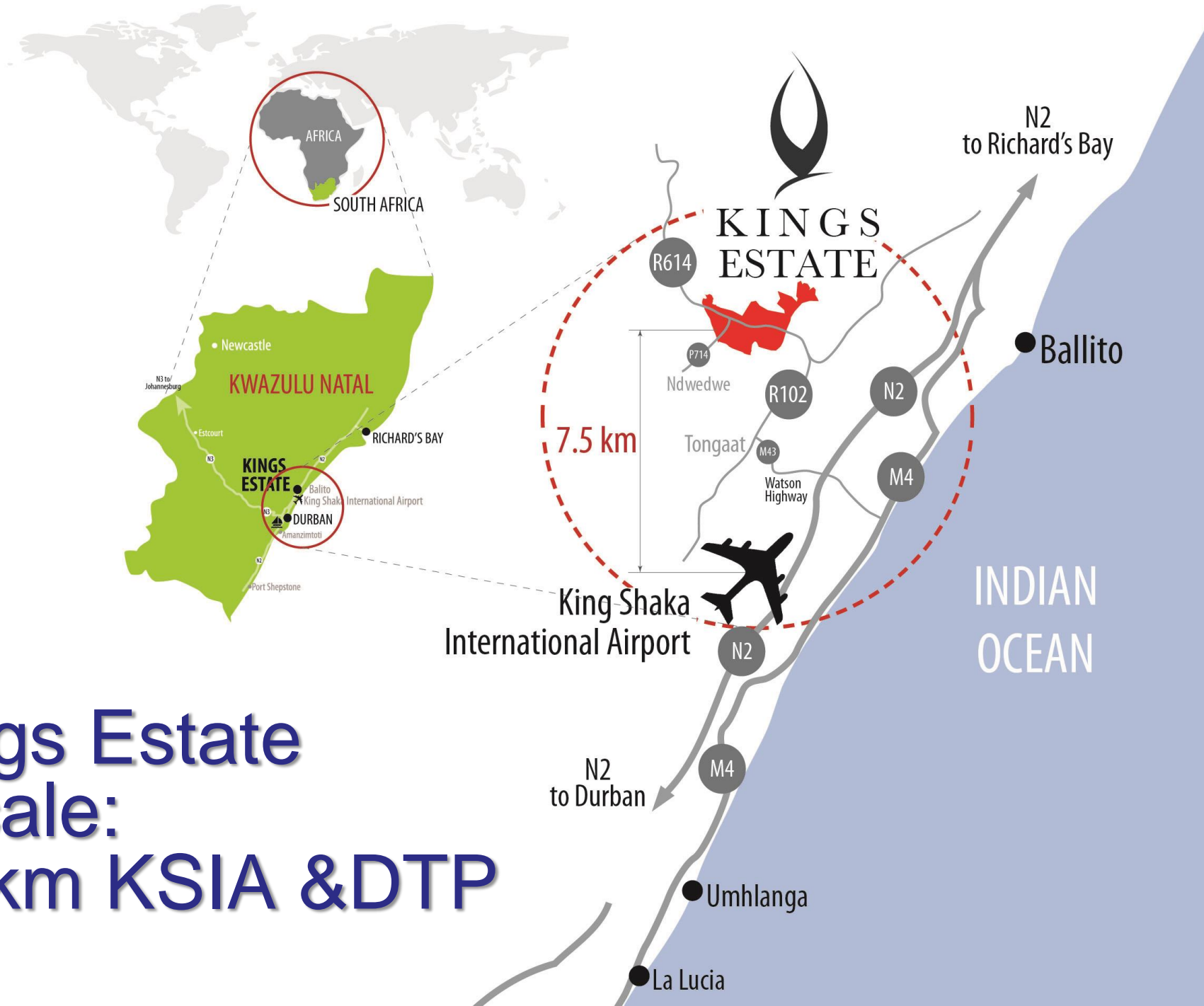
- Initial runway length 3,700m, but expandable to 4,000 m
- 24 hour operating capability
- 7.5 million passenger capacity

Trade Zone

- ***Incorporating:***
 - Cargo Terminal and Perishables Centre
 - Time sensitive manufacturing and value added logistics areas
 - ICT Platform and Electronic Trade
 - Government Support Services
 - Agricultural Production and Processing Zone
 - Business Support Environment

R11Bn+ Megaproject





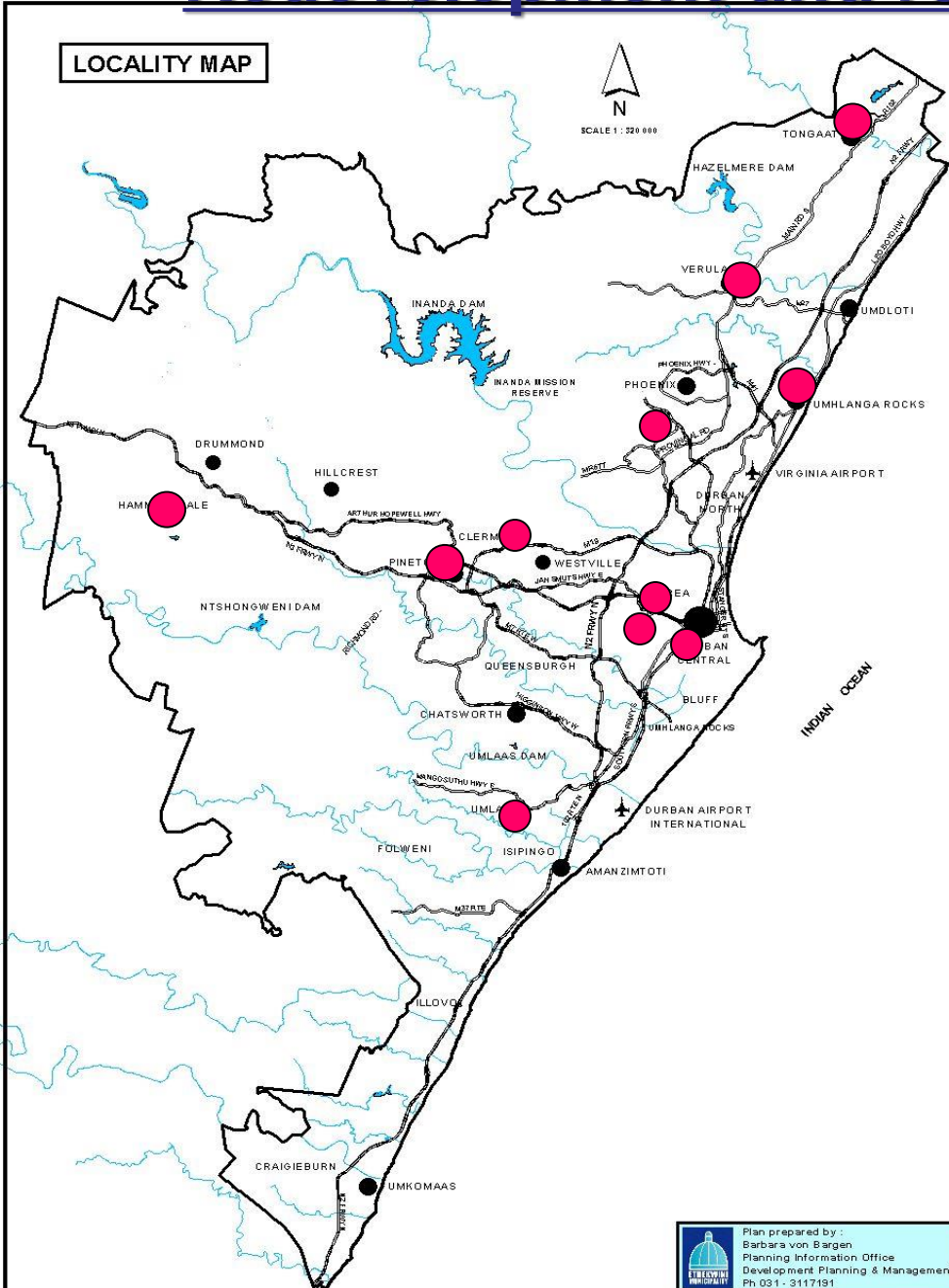
**Kings Estate
Locale:
7.5km KSIA & DTP**

BROADER PIPELINE

- **Event led Tourism Strategy**
 - 2010 WC, Indaba, Africa WRC?, FIFA Beach Soccer WC, Olympics?
- **Robust FDI + local BR&E**
 - Durban has Billions in the pipeline
- **Dube Trade Port Industrial JV expansions**
 - Larger industrial, commercial, retail developments
- **Industrial/Sector Support & Clusters, e.g. Durban Film Office, AgriBusiness, Contact Centre/BPO, Auto, Textile/Clothing, Maritime, ICT, Chemical, etc**
- **Durban Automotive Supplier Park - Durban South**
- **Cornubia & Sibaya Node Developments**
 - 100's of Ha. for Hotels, Residential, Retail, Commercial & Industrial
- **Bridge City/KwaMashu New Town Centre**
 - Large PPP redevelopments in Presidential Project area
- **Add'l key Town Centre, Rural & Logistics Node/Corridor redevelopments**
- **ETA Transport Infrastructure; Agri-Business; ICT & E**



Redevelopment and regeneration in key nodes



1. NDPG Projects:

- Umlazi
- Malukazi
- INK nodes & corridors
- Mpumalanga Town Centre
- Clermont/KwaDabeka

2. Town Centre Renewals:

- Verulam
- Tongaat
- Pinetown

3. Tourism Nodes:

- Umhlanga

4. 2010 Sports Hubs:

- King Zwelithini Stadium
- Princess Magogo Stadium
- Sugar Ray Xulu Stadium

5. Inner City Strategic Projects:

- Warwick Precinct
- South & Addington Beach
- Kings Park

6. Rural Nodes:

- Shembe Village Settlement Plan
- Inanda & Hazelmere Dam
- Adams Rural Node

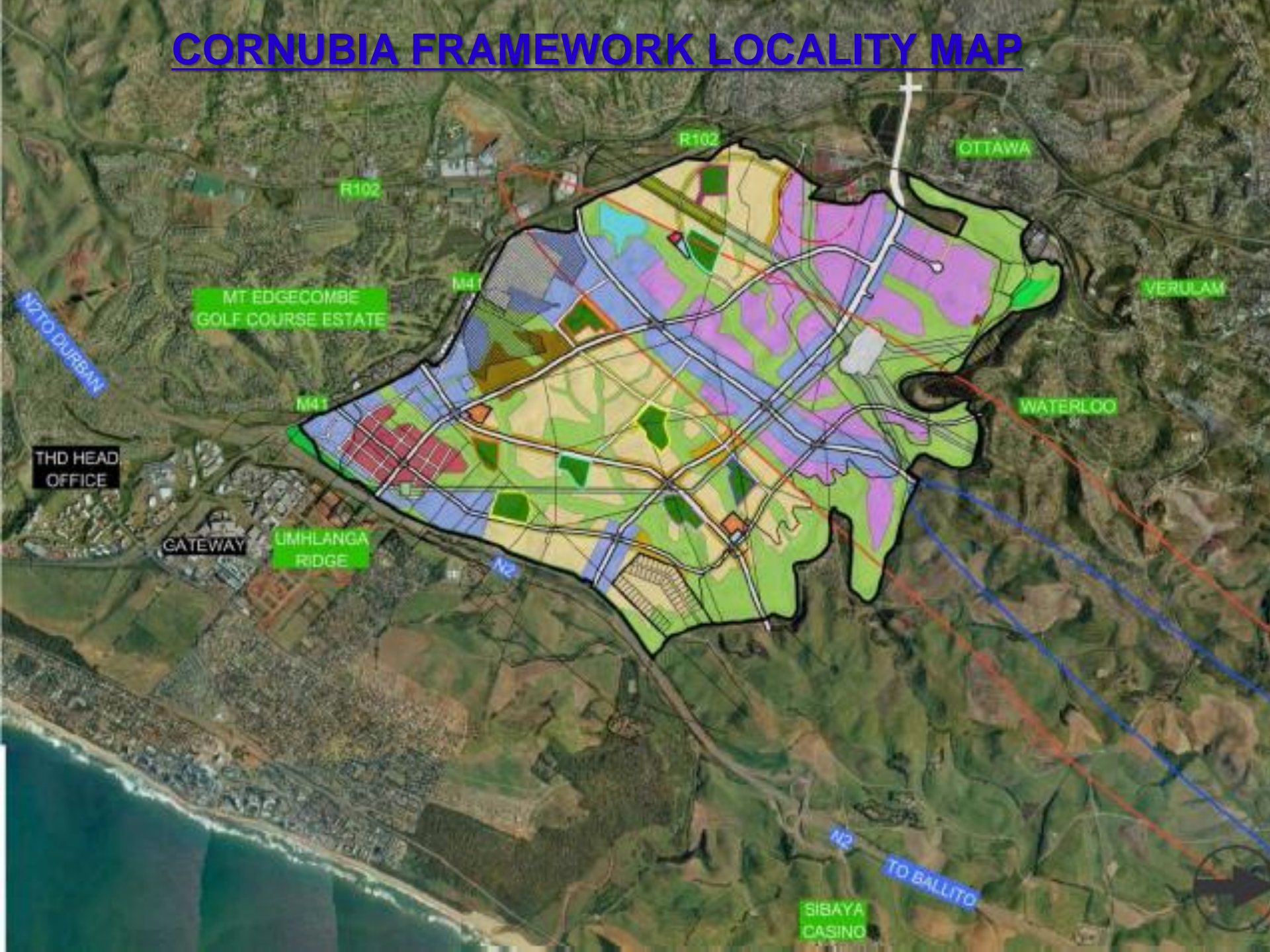


1. Part of broader strategy to rejuvenate region
2. 1000's of new jobs
3. R3 billion+ mixed-use commercial/residential project
4. Joint Venture partnership with Tongaat-Hulett Developments

Spatial Integration

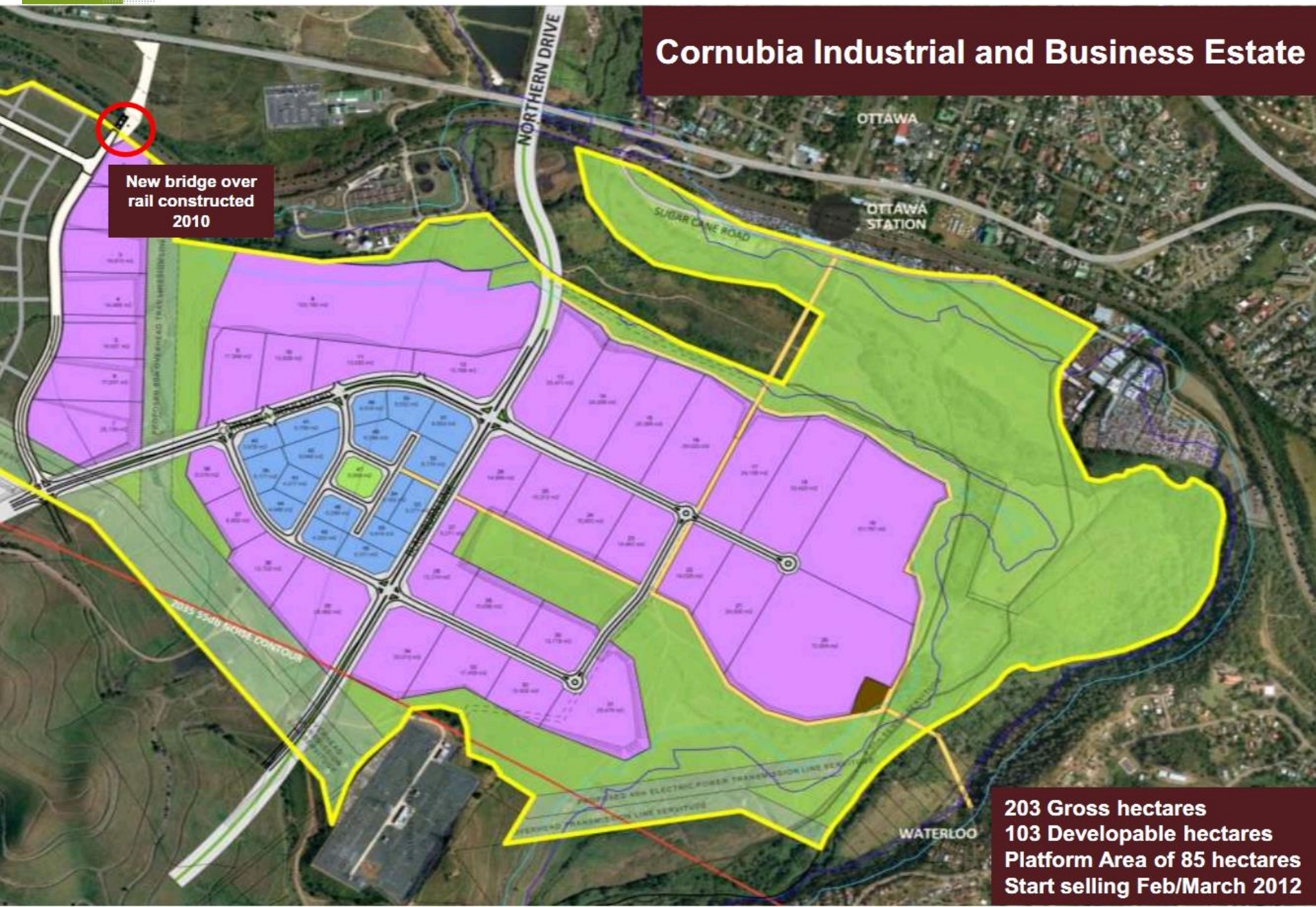
Bridge City

CORNUBIA FRAMEWORK LOCALITY MAP



Cornubia Industrial & Business Estate

Cornubia Industrial and Business Estate



Sibaya Extension

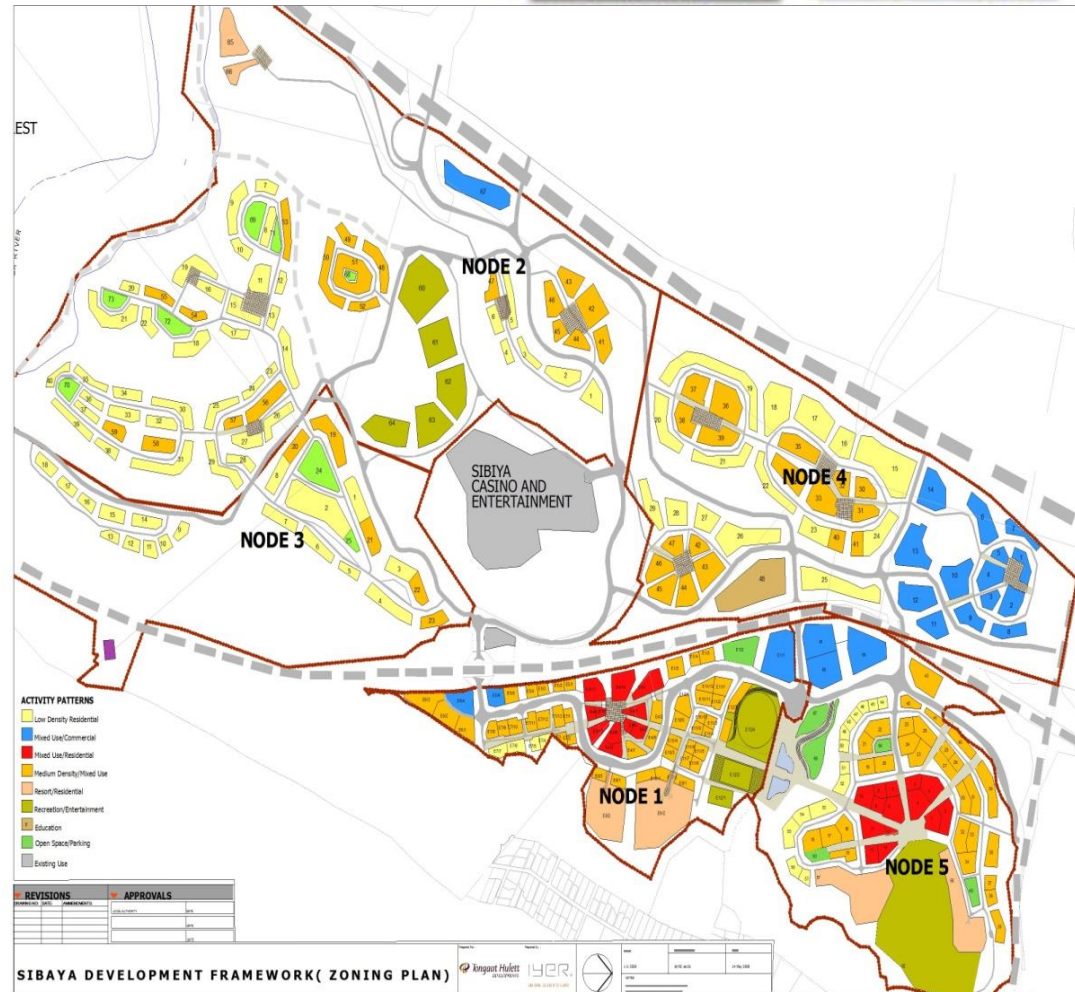


Description: 6,000 residential dwellings, 6 hotel sites, 185,000m² of commercial space, school and hospital sites, botanical gardens potential, 450Ha of green/ open space

Investment Value: R15b

Council Impacts: R238m per annum in Rates, 100000-construction 11500 permanent jobs

Status: Rezoning and subdivision approvals in progress with eThekweni Municipality



A lifestyle of business
and pleasure *together*

TRANSPORT

- Inner City Distribution System
- Public Transport Call Centre
- Warwick Multi-Modal transport Precinct Redevelopment
- Public Transport Lanes
- Freeway management system
- Park and rides
- Walk all the way access system
- King Shaka Airport & beyond...
- Moses Mabhida Railway Station

Bluff Headlands

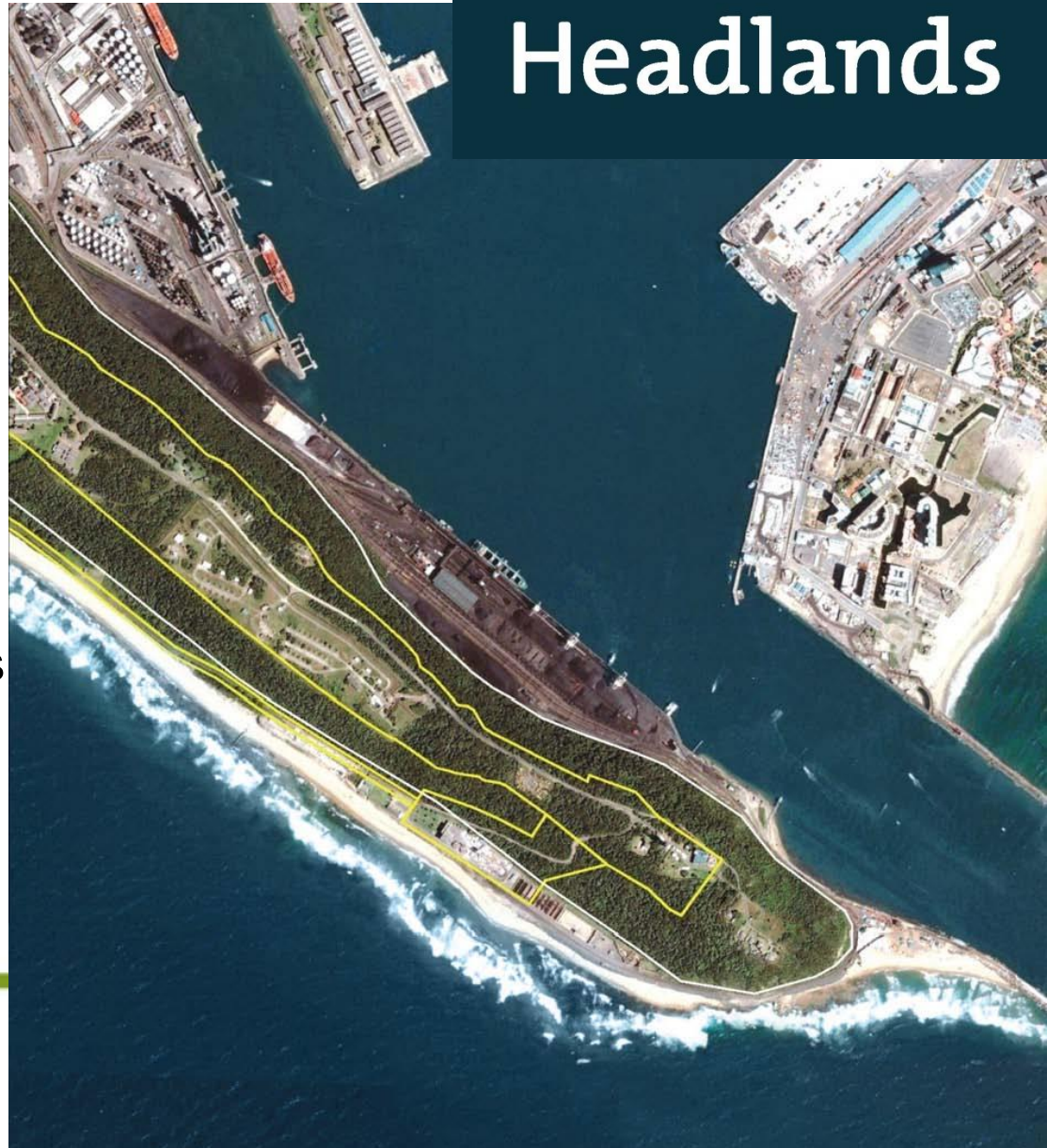


Headlands

Description: 950 000 sq.m of tailored, fully serviced, built and landscaped terrain

Objective: The creation of R3Bn mixed use facility (Residential, rec.centre, cross-harbour bridge, hotels, commercial, retail etc.

City Impacts: Potential to create 105 000 construction jobs and 10 000 permanent jobs plus R187 million per annum in the form of Municipal Property Rates.



BEACH NODES

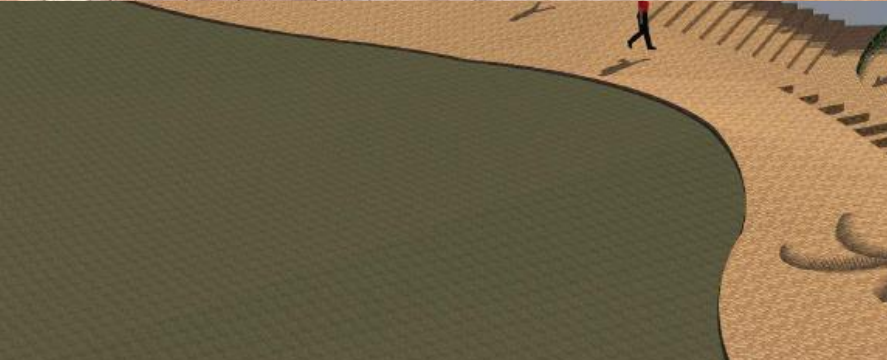
■ Coastal Redevelopment

- ★ 100 KM of “Platinum” Coastline (Tonga River to Scottburgh)
- ★ Focus on high intensity tourism nodes (Central, Umhlanga, Westbrook/La Mercy, ‘Toti, Warner Beach, Doonside, ...)

■ Key City Nodes:

- ★ Promenade
- ★ Addington Beach
- ★ New beach Node
- ★ New Pier Node
- ★ All complete 2010
- ★ Now Suncoast to Blue Lagoon







Economic Infrastructure uShaka Marine World and Durban Point Development


DUBBAN



1. *Strategy to support & establish clusters*
2. *Aligned with national sector prioritization*
3. *Aligned with City's potential growth sectors*
4. *Comprehensive business plans to flesh out strategies*
5. *Investment Promotion & facilitation*

W W W . D I P A . C O

Sector Support

Enhancing Competitiveness



1. *Business (SMME) Fairs to bridge the gap between formal large businesses and SMME sector*
2. *Networks and linkages with mainstream economy*
3. *Opportunities to showcase products and services*
4. *Opportunity to ID key constraints for small businesses*

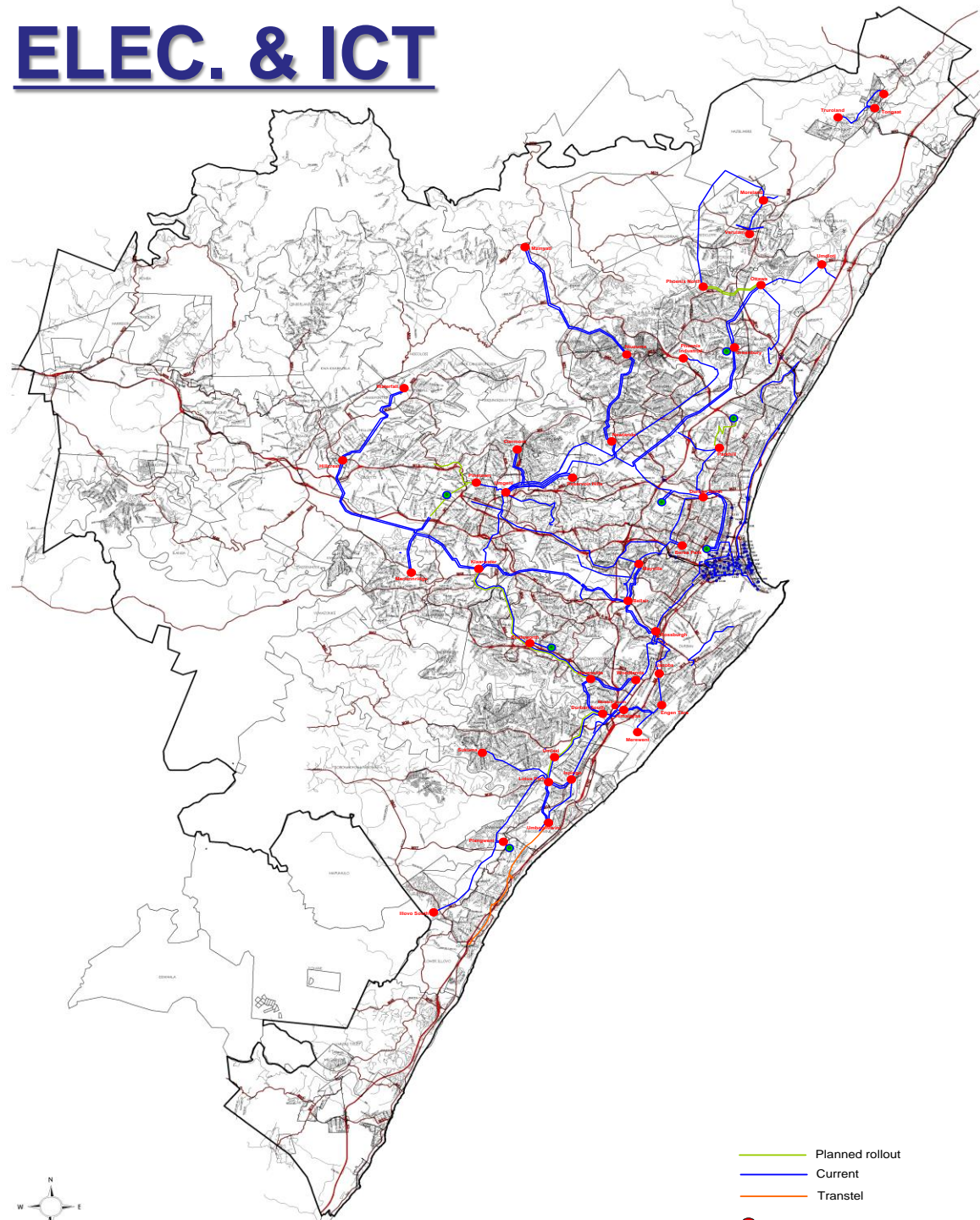
Enterprise Development

SMME Business Support & Markets


DURBAN

- ICT and electronic requirements being addressed
- Wireless public buildings.
- Fibre optic upgraded to carrier class and extended for business and community use
- Wireless WAN rollout covering the city
- Public Transport call centre
- CCTV, tourism kiosks and communications
- Terrestrial trunking
- Secure network

ELEC. & ICT







AMS strategic objectives

The eThekweni AMS aims to:

- Promote food security & household food production
- Combat climate change
- Empower communities economically
- Encourage creativity & innovation in addressing constraints
- Promote local economic and skills development¹.

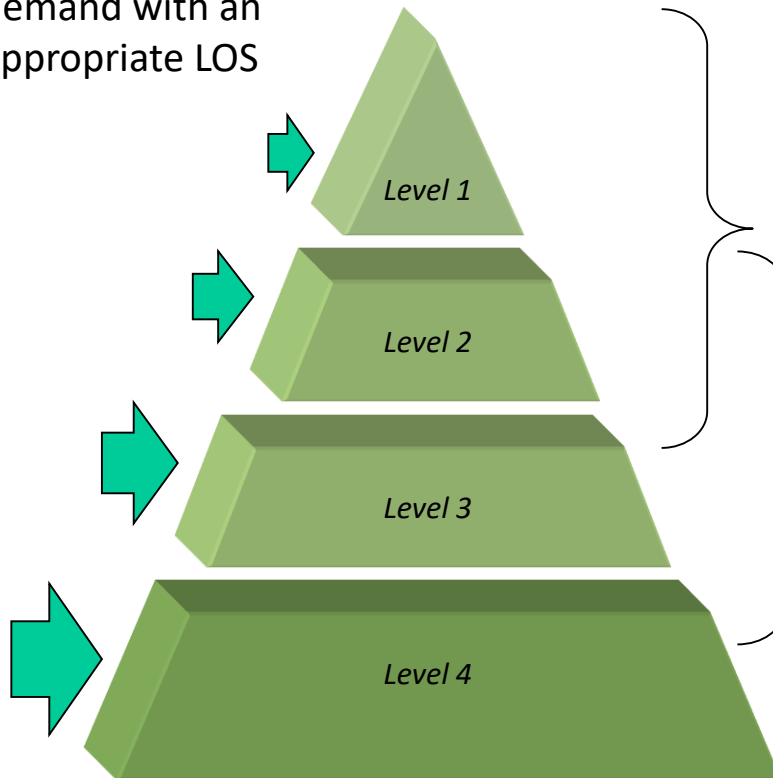
*¹rural regeneration focus & sustainable job creation
with a strong emphasis on women & youth*



Who are the target groups?

AMS Agriculture Management Section

Respond to the demand with an appropriate LOS



Demand Pyramid

Semi /Commercial focus

- Community mini-farms (ready viable sustainable markets)
- Contract growing, niche projects; (soya-bean, mushrooms, aquaculture etc)

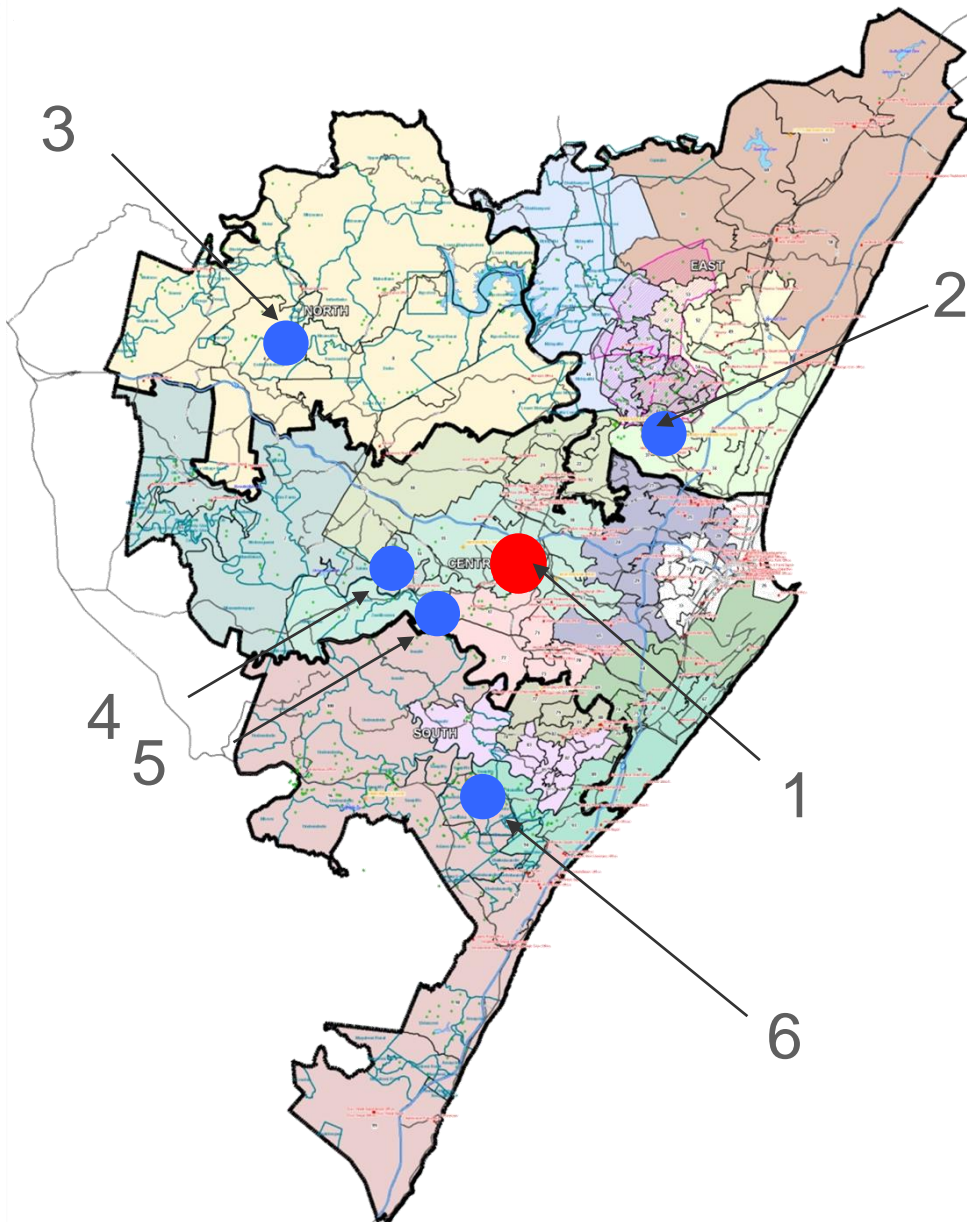
Socio-economic focus (Food sovereignty with less dependence syndrome)

Social focus (Food security)

- Homestead, vulnerable households,
- Institutional gardens: clinics, schools orphanages, etc
- Informal settlements



AMS support model - HUBS



- 1) Northdene AgroEcology Research & Development centre
- 2) Newlands Mashu permaculture Centre
- 3) Inchanga
- 4) Marianhil Monastery
- 5) Scorpio place
- 6) Umbumbulu hub



AMS special projects

In addition to the ongoing support provided through the horticulturists, several special projects are receiving additional implementation support through the AMS Strat team and appointed consultants:

- Soya programme
- Aquaculture programme
- Rainwater harvesting programme
- Informal settlement – livelihood programme
- Schools programme (275 schools)
- Composting programmes (fresh produce market waste)
- R46 million zonal 3 year budget.
- Renewable / green technologies
- Integrated Agriculture Delivery MasterPlan (IADM)



Siyabonga, for your visit &
partnership support

iNkosi sikelele iAfrika

iNkosi ibe nawe!

God Bless You!

