



Barcelona

Department of International Relations

March 2016

N

B

C



POPULATION & AREA

One of the main metropolitan areas of Europe



Barcelona is the capital of Catalonia.

With an area **of 100 Km² and 1,6 million inhabitants**, it is one of the densest cities in Europe.

Barcelona represents **0,3% of the territory of Catalonia** but concentrates **21% of the Catalan population**.

The city has undergone a strong increase in immigrant population over the last decade. Currently **the foreign population represents 16,3% of the total population**. It is a very diverse immigration: 150 nationalities live together in BCN.

2014	Population	Surface (km ²)	Density (inhab/km ²)
Barcelona	1.602.386	102	15.685
Metropolitan area	3.214.211	636	5.054
Catalonia	7.518.903	32.108	234
Spain	46.771.341	505.968	92



Source: INE and Dept. Of Statistics, AB. Annual



DIVERSIFIED ECONOMY

Barcelona generates **30% of the GDP of Catalonia** and employs **34% of the workers.**

The GDP of the city is 39% higher than the average of Catalonia while in terms of per capita income, it is 14% higher.

	Barcelona	Catalonia	BCN/CAT
GDP (million €)	61.915	205.315	30%
GDP per capita	38.500	27.700	139%
Income (million €)	31.038	125.141	25%
Income per capita	19.300	16.900	114%
Income= Gross disposable household income. Data 2010			
Employed*	992.668	2.944.870	34%

* Registered workers on the Social Security

Source: Idescat (annual) i INSS (quarterly)



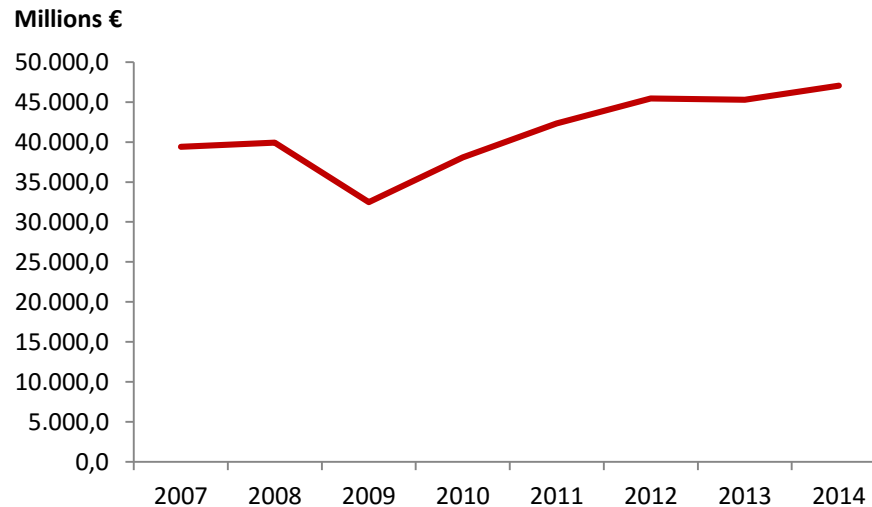
CITY OPEN TO THE WORLD



Barcelona represents **20% of the Spanish exports and 29,3% of the high and medium-high level technical contents.**

More than 60% is exported to European countries and almost half (47%) is focused on 5 countries: France, Germany, Italy, Portugal and the United Kingdom.

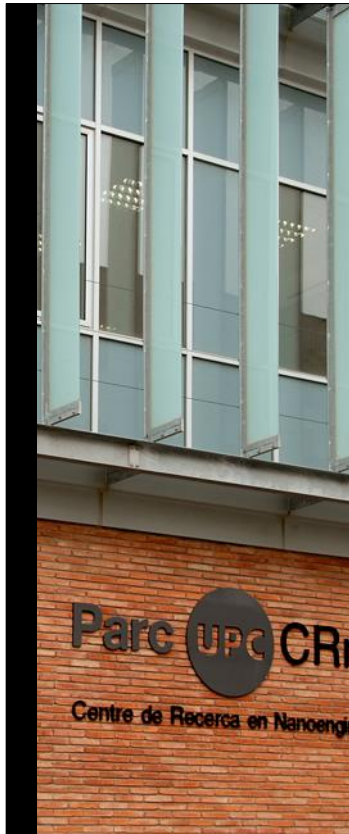
Exports from province of Barcelona



Source: Secretary of State for Trade; Ministry of Economy and competitiveness. Monthly



LABOUR MARKET AND LEVEL OF TRAINING



It has a qualified human capital and an internationally recognised supply of universities, business schools and masters degrees.

5 public universities. 3 private universities. 205.000 university students

**Best European
business schools :**

**4th ESADE
7th IESE**

According to the Financial
Times

**UB: among the 75
best universities
of the world for
health sciences.**

Jiao Tong University -
Shanghai

**UB, UAB,
among the best 175
universities in the
world.**

**UPF among the best
300**

**UPC among the best
350.**

QS World University Ranking

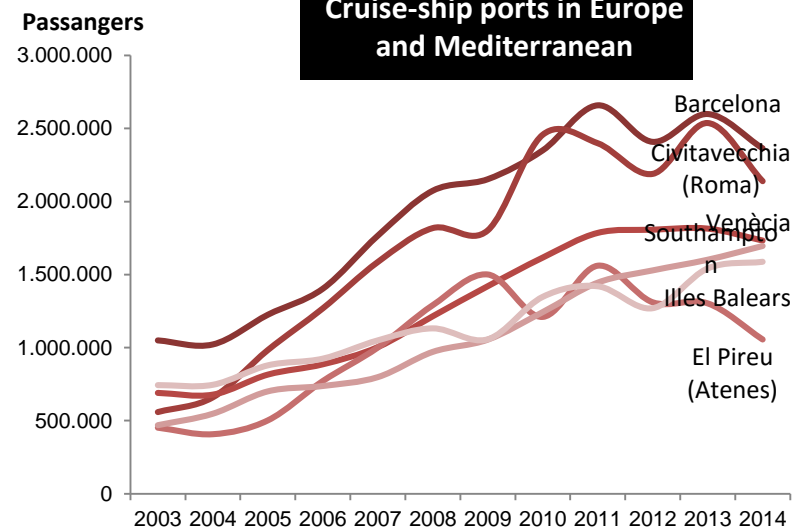
Source: Financial Times. Jiao Tong de Shangai, QS World University Rankings. Annual



CITY OPEN TO THE WORLD

The airport of Barcelona is the **tenth European airport in number of passengers**. 73% of the passengers correspond to international transit.

With **2,6 million cruise-ship passengers**, the port is the first destination for cruise-ship passengers in the Mediterranean.



Source: AENA, Port de Barcelona, Monthly.



COHESIVE CITY



Barcelona is a **city of medium level incomes**, but in these years of crisis the weight of low incomes has noticeably increased.

In recent years a process of **widening of territorial inequalities** has been observed, a very common fact in situations of economic crisis such as the present one.

Disposable Household Income per capita 2013

Districts	Resident Population	Index RFD BCN=100
	2013	2013
1. Ciutat Vella	104.334	77,2
2. l'Eixample	264.851	116,4
3. Sants-Montjuïc	182.353	75,3
4. Les Corts	81.570	140,3
5. Sarrià-Sant Gervasi	145.934	186,7
6. Gràcia	120.976	105,2
7. Horta-Guinardó	167.940	77,9
8. Nou Barris	165.737	56,2
9. Sant Andreu	146.539	74,4
10. Sant Martí	233.856	80,6
Barcelona	1.614.090	100,0

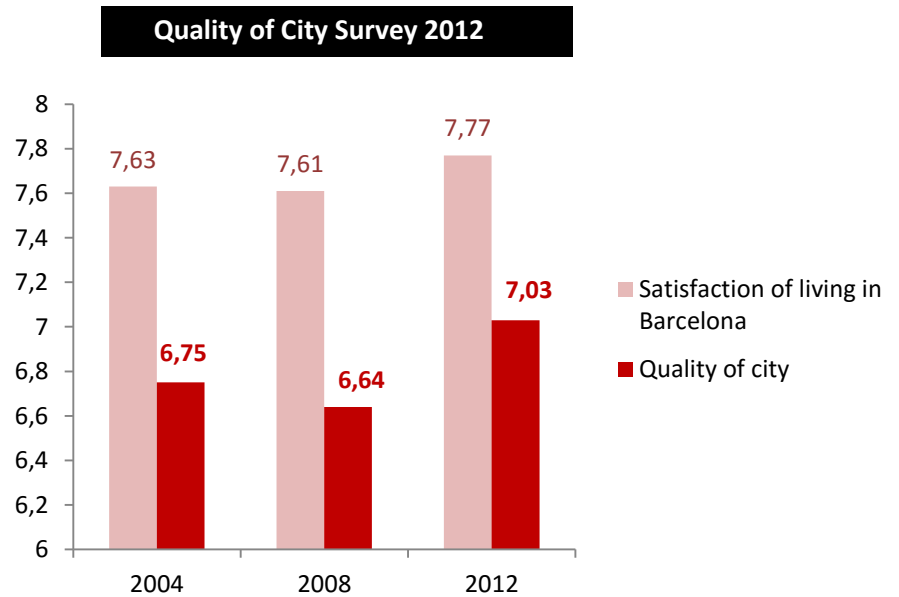
Source: Barcelona Economia-GTP-AB.Annual



SATISFACTION OF LIVING IN BARCELONA



The Barcelona citizens **feel satisfied with living in the city** and notably rate the level of quality of life



Source: Quality of City Survey –AB



MISSIONS

- Capacity Building and Cooperation Exchange: Chengdu and Wuhan (May 2015)
- 10th High Level Dialogue and Seminar: Brussels, (June 2015)
- High Level Delegation from Chengdu and Wuhan (June 2015)
- High Level Delegation from various chinese cities(November 2015)



PILOT PROJECTS

- Automotive sector: Automotion Cluster of Catalonia – Wuhan: Business mission. (Ficosa, Zanini, MMM, etc). ACCIO
- Education: Blanquerna University- University of Wuhan: Student exchange. Business School - Wuhan
- Design: Design Center – Wuhan. (PIMEC, Barcelona Design Center)
- Fira de Barcelona – Chengdu. Smart City Expo World Congress



PILOT PROJECTS

- R&D: Eurecat
- Ports: Barcelona Port – Barceloc
- Tourism : Exchange experiences and projects
- Summit EU-ASIA on sustainable development



**Ajuntament
de Barcelona**

**Thanks and see you soon in
Barcelona!**

Miquel Mateu Ballesté

mmateub@bcn.cat

Amadeo Jensana

ajensana@casaasia.es